



Rugby Communities

## E-Bulletin

### April 2025

**Welcome to the latest edition of our E -Bulletin**

*If you would like to promote an activity/event or information, please send it through to [cdwrugby@warwickshire.gov.uk](mailto:cdwrugby@warwickshire.gov.uk)*

*Please let us know at any time if you no longer wish to receive these updates*

**Pages 2 Events, Activities, and Information**

**Page 27 Jobs**

**Page 28 Consultations**

**Page 31 Volunteering**

**Page 37 Funding**

**Page 46 Useful Contacts**

## **Warwickshire Fire and Rescue Service (WFRS): Enhancing patient safety with Hospital to Home service**

WFRS is helping hospital patients return home safely with their Hospital to Home service. The Hospital to Home service, which launched in 2018, aims to support elderly and vulnerable patients who have been treated at hospital and are well enough to return home, where they feel safe and can be supported to live independently. [Read more](#)

<https://www.warwickshire.gov.uk/news/article/6120/warwickshire-fire-and-rescue-service-enhancing-patient-safety-with-hospital-to-home-service>

## **Community Food Fleet – Warwickshire’s Meals on Wheels service**

Did you know that [Community Food Fleet](#) delivers ‘Meals on Wheels’ 365 days a year? Run as a not-for-profit service, by local charity, WRCC (Warwickshire Rural Community Council) the Community Food Fleet is supporting people to live independently countywide. All delivery drivers are enhanced DBS checked and are trained to carry out basic well-being and safety checks when they deliver meals, giving customers, their carers and next of kin peace of mind. If you are interested in finding out more or would like to make enquiry about ordering a meal in future, please do get in touch on 01926 800915.

<https://www.wrccrural.org.uk/services/community-food-fleet-is-the-new-meals-on-wheels-provider-in-warwickshire>

## **VE and VJ Day 80 Toolkit**

The official [VE VJ Day 80 website](#) has some great ideas of how to commemorate the 80th anniversaries of VE and VJ Day, such as brand resources including logos, bunting templates, activity sheets and more. It is open to any organisation or individual to use in conjunction with activities or events relating to the VE and VJ Day 80 commemoration, subject to the acceptable use terms below.

<https://ve-vjday80.gov.uk/toolkit>



# Great Big Green Week 2025: 7th to 15th June 2025

**Great Big Green Week is the UK's biggest celebration of community action to tackle climate change and protect nature.**

<https://www.greatbiggreenweek.com/about>

During the week, communities, schools, businesses, churches, mosques, and more join together in a wave of support for action to protect the planet.

Are you planning anything to correspond with the Great Big Green week 2025?

Why not swap throwing away unloved items for giving them a new lease of life, or swap skills with another organisation in your area. You could come together with neighbours in your street to swap an unloved area to one that attracts wildlife.

The possibilities are endless. However, every swap will add together to make a big difference.

It could be something you already do, like a regular litter pick, or grow some veg.

Or it could be something new, like having a plastic free picnic or ride your bike to school or work.

There are lots of resources and ideas to be found here:

<https://www.greatbiggreenweek.com/resources>

If so, we would like to hear from you as we are planning a few activities and would like to promote all the wonderful things that happen in Rugby Borough to help the planet, we live on, to thrive.

Please send your plans and ideas to CDW Rugby

[cdwrugby@warwickshire.gov.uk](mailto:cdwrugby@warwickshire.gov.uk)







# Food & Faith Festival

Saturday 10<sup>th</sup> May, 2025  
12 noon – 3pm

Rugby Indian Community Centre  
Edward Street, Rugby,  
CV21 2EZ

Come and sample some **FREE FOOD** from local places of worship around Rugby in a relaxed and friendly environment. Have a chat and learn about different faiths and cultures and talk to your local policing team.

For more information, email [foodandfaithfestival@warwickshire.police.uk](mailto:foodandfaithfestival@warwickshire.police.uk)

The event is **FREE** to attend, please scan the QR Code to book.



WARWICKSHIRE  
**POLICE**

[www.warwickshire.police.uk](http://www.warwickshire.police.uk)



warwickshirepolice



warwickshirepolice



@warkspolice

WCAVA are excited to announce that nominations are now open for the **Volunteer Recognition & Reward Event 2025**, to celebrate the exceptional contributions of volunteers in our community.

We are celebrating all volunteers and every individual or group nominated will receive a special mention at the event. The categories for recognition will be decided by the Volunteering Coordinator, ensuring that each volunteer's unique contributions are acknowledged in the best possible way.

If you know of an individual or group of volunteers who have made a significant impact—whether it's through running community projects, supporting local causes, or simply giving their time to help others—we invite you to nominate them for recognition.

### **Save the Date!**

The event will be held at The Benn Hall, Newbold Rd, Rugby CV21 2LN on Wednesday 9th July 2025 from 6:30 PM to 8:30 PM.

To nominate an individual or a group, simply complete a brief online form (see link below) explaining why you believe they deserve recognition. This is an opportunity to honour the incredible work being done in our communities.

<https://forms.office.com/e/uTnJ3rAv11>

For more information or if you need assistance, please reach out to:

Amy Muzyka - [amy.muzyka@wcava.org.uk](mailto:amy.muzyka@wcava.org.uk) (Volunteering Coordinator - Rugby Borough)

We look forward to celebrating the dedication and passion of our volunteers and acknowledging their amazing contributions.



# Crossing Thresholds Cafe

Exploring death and dying  
within different cultures



Saturday 10 May 2025 10:00-12:00  
Belgrade Theatre Coventry

A drop in Dying Matters Week  
conversation group - no need to book

This year UHCW Compassionate Communities are offering 2 conversation cafes for Dying Matters week. One on Wednesday 7<sup>th</sup> in Rugby, and one on Saturday 10<sup>th</sup> in Coventry

Omega is partnering with us on the Belgrade date.

Please can you share widely with your many connections? The hope is that these will be attended by people from various parts of the community to explore different kinds of culture and practice around death and dying, as per the theme for this year's Dying Matters week.

It's a drop in event, no need to book for this one.



## Dying Matters.



## So let's talk about it.

We talk and think about the end of life,  
death and grief differently.

What's common to all of us?  
Can we learn from each other?

Let's find out, together.

Drop in to this Dying Matters Week  
cross-culture conversation group -  
no need to book

Weds 7 May 2025  
10:30-11:45  
In St. Andrew's Church  
Rugby CV21 3PT





# VAISAKHI PARTY

Evening entertainment by DJ Tony J  
Local dancers



**SPECIAL GUEST**  
**Slinder Pardesi**



Rugby Workers Club, 32 Oliver St, Rugby, CV21 2ET

Ticket prices:

Adults: £16, Children under 16: £8

**17th**  
**May**

**FOOD & DRINK**  
**ENTERTAINMENT**

**5**  
**PM**

For more information contact:

Major Sidhu: 07803927944

Sheila Parmar : 07522345738

Prab Mann: 07415405444

Ravi Dhinsa: 07969696186



# Pen Making Evening

Here at the Cubbington Hobby Centre

Thursday 8<sup>th</sup> May at 7pm

All  
Welcome!



Cubbington & Offchurch Woodturners would like to invite you to an expert demonstration in the fine art of turning pens by Paul Liggins. From a piece of wood or resin to a beautifully finished pen...it's magic!



# Route 41

## Community

## Café



at Dunchurch Baptist Church  
Coventry Road



Open 3rd Tuesday  
of every month

9.30 - 12 noon

for tea, coffee & light  
refreshments



Children's play space  
available

*Everyone welcome - do pop in!*

[www.facebook.com/DunchurchBaptistChurch](http://www.facebook.com/DunchurchBaptistChurch)

# DO YOU NEED HELP?

**CITIZENS ADVICE** gives free, independent, and confidential advice with issues about benefits, employment, money, debt, divorce/separation, housing, consumer problems and much more...

**COME ALONG TO ONE OF OUR DROP-IN SESSIONS:**

***Mondays, 9:00 – 13:00***

***Wednesdays, 9:30 – 12:30***

***Boughton Leigh Children and  
Family Centre  
Wetherell Way  
CV21 1LT  
Rugby***

***Brownover Community Centre  
Bow Fell  
Brownover  
CV21 1JF  
Rugby***



**citizens  
advice**

**Bedworth, Rugby  
& Nuneaton**



# **VE Day**

## 80th Anniversary

**Monday 5th May 2025**  
**Whitehall Recreation Ground, Rugby**  
11.00am - 5.00pm

Live music, funfair, bouncy castle, dog show, charity, craft and food stalls - and much more...

Come and enjoy a great day with the family!

[www.rugbyspringfair.org.uk](http://www.rugbyspringfair.org.uk)

**FIND OUT  
MORE**





## Hillmorton Remembers VE80

On Thursday 8th May, Hillmorton will be remembering the events of May 8th, 1945.

Following the short service of remembrance at the Hillmorton War Memorial, there will be a 1940's themed evening event, with the involvement of RBL branch members, the Rotary Club of Rugby Dunsmore, The Ukrainian Choir, the Phoenix Ukulele Band and Hillmorton Ex-

Servicemen's Club. There is no charge to attend and organisers hope that people will come along and enjoy a drink or two and join in some of the songs from the 1940's.



# HILLMORTON REMEMBERS

## VE80

### 8 May 2025

**7.00pm:** Hillmorton War Memorial for a short service of remembrance

**8.00pm:** Hillmorton Ex-Servicemen's Club for "An evening with Hillmorton's Vera Lynn and Friends" including the Ukrainian Choir and the Phoenix Ukelele Band.

# WALK + talk



## MONTHLY GUIDED WALKING SOCIAL GROUP

5K SOCIAL WALK FROM HILL STREET CENTRE

FIRST TUESDAY OF EACH MONTH

GET ACTIVE, MEET NEW PEOPLE, EXPLORE RUGBY

ADULTS ONLY 18+

GUIDED BY HILL STREET STAFF (FIRST AID TRAINED)

REFRESHMENTS PROVIDED AT END OF WALK

DOGS WELCOME TO JOIN US 

FREE TO ATTEND FOR ALL

STARTING 1ST APRIL 2025  
09.30AM - 12.30PM



CALL THE CENTRE ON 01788 576041

TO BOOK YOUR SPACE IN ADVANCE



HILL STREET YOUTH & COMMUNITY CENTRE  
HILL STREET, RUGBY, WARCS, CV21 2NB

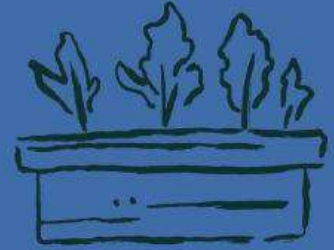


garden  
organic

# Sustainable Container Growing; Free Workshop

Tuesday 13<sup>th</sup> May

Brownsover Community Centre  
6-7:30pm



Come along to learn how to grow in containers in a more sustainable way. Learn about the advantages and disadvantages, and how to feed and water your containers. Make the most of your outdoor space with our interactive workshop.

Scan here to book your  
space:







## Refugee Week 2025

[Refugee Week](#) 2025 is taking place between 16th and 22nd June 2025. It is the world's largest arts & culture festival celebrating the contributions, creativity and resilience of refugees and people seeking sanctuary. Established in 1998 in the UK, this annual global festival aligns with World Refugee Day, celebrated worldwide on June 20th.

The theme of Refugee Week 2025 is 'Community as Superpower', and Warwickshire County Council (WCC) want to celebrate the power of communities coming together in solidarity to support those people who have been displaced through conflict. It is about honouring everyday heroes who have offered their home, their time, or their expertise to support those who arrived in Warwickshire to rebuild their lives.

WCC want to raise awareness of people's journeys and recognise their contributions within their local community. Whether this is through arts, learning a new language together or sharing food, they want the week to be a celebration of resilience, strength and fostering a county that welcomes all.

Join them (and us) in organising and planning a diverse week of activities offering creative, engaging, and fun activities. However small or big, we want you to get involved in sharing time together to be part of a movement to create a significant change.

Please email: [dominikastockham@warwickshire.gov.uk](mailto:dominikastockham@warwickshire.gov.uk) if you would like to find out more!

### **Children invited to explore community superpowers**

Children and young people across Warwickshire are invited to take part in a special arts competition to celebrate Refugee Week 2025.

Read more:

<https://www.warwickshire.gov.uk/news/article/6164/warwickshire-art-competition-asks-children-to-explore-community-superpowers>





**Refugee Week 2025**  
**16th to 22nd June 2025**

As part of this year's Refugee Week celebrations, EQulP is excited to launch a special **Podcast Project** that will spotlight the inspiring voices of **Refugees, Asylum Seekers, and Volunteers** across Warwickshire.

The podcast will centre around powerful personal stories of **resilience, strength, and community**, in line with this year's theme: "*Community as a Superpower.*" Participants will reflect on the impact they've made and continue to make within their communities, drawing on their unique life experiences. Whether rebuilding lives in a new country or supporting others through volunteering, each story will highlight the strength and solidarity that emerges when communities come together.

We are looking to feature **7–10 individuals** for relaxed, informal interviews. These recordings will be preserved by the **Warwickshire County Record Office** as part of the county's official archive, a lasting tribute to the contributions of Warwickshire's refugee communities.

For further information contact: [ahmed@equipequality.org.uk](mailto:ahmed@equipequality.org.uk)

**Family and Relationship Support offer for Rugby** have some spaces on programmes that are starting after the Easter break. The flyers and the direct link to the programmes are below:

Nurture Programme (Rugby) :

<https://www.eventbrite.com/e/1074460804189?aff=oddtcreator>

Keeping Your Child in Mind (Nuneaton) :

<https://www.eventbrite.com/e/1000607001477?aff=oddtcreator>

Solihull Approach Programme (Virtual):

<https://www.eventbrite.com/e/1254301031149?aff=oddtcreator>

Talking Teens Programme (Rugby):

<https://www.eventbrite.com/e/1279031320109?aff=oddtcreator>

There is also a spreadsheet with the workshops and programmes in Rugby and virtual delivery over the next couple of months which might be useful to have as a quick reminder.

They would like to start planning for after the Summer holidays so if you would like their team to come into your setting; and you have a space for them to deliver workshops or programmes, then please get in touch.





Warwickshire Family  
and Relationship  
Support

WARWICKSHIRE  
Families  
First

## Talking Teens

**FREE 4 Week Talking Teens Programme**

for parents and carers at:

Coventry & Warwickshire Mind, 28  
Cromwell Road, Rugby, CV22 5LY

5<sup>th</sup> June – 26<sup>th</sup> June 2025

Thursday's 10:00 – 12:30

Talking Teens is a 4-week programme for parents of teenagers with a focus on:

- Relationships within the family
- Communication
- Negotiating
- Decision-making
- Strategies to reduce conflict



Come along to meet other parents and learn about ways to support your teenager

Scan QR Code to  
book your place:



For further information please email:

[ehparenttrainers@warwickshire.gov.uk](mailto:ehparenttrainers@warwickshire.gov.uk)

OFFICIAL



**Warwickshire Family  
and Relationship  
Support**

# Nurture Programme

**10-week programme for parents/carers at:**  
Cawston Grange Primary School, Scholars drive, Cawston,  
Rugby CV22 7GU

**Date:** 28<sup>th</sup> April 2025 – 14<sup>th</sup> July 2025

**Day:** Monday's

**Time:** 12:30 – 14:30

Being a parent is exciting and rewarding but there are also times when children behave in ways that are challenging.

The Nurturing programme helps deal with those challenges so that you can have a calmer, happier life.

The 10-week Nurture Programme gives parents/carers practical tools and information to support you to raise happy, confident, and emotionally resilient children.

Eventbrite  
page:



For enquires please contact [ehparenttrainers@warwickshire.gov.uk](mailto:ehparenttrainers@warwickshire.gov.uk)



**Warwickshire Family  
and Relationship  
Support**

**Solihull Approach Understanding Your  
Child Parenting Programme**

**FREE** 10 week Programme for parents and carers.

Delivered Virtually

**Date:** 7<sup>th</sup> May 2025 - 9<sup>th</sup> July 2025

**Day:** Wednesday's

**Time:** 17:30 - 19:30

Would you like to know more about.....



- Your child's development - Age and Stage
- Your child's behaviours - Being angry, not getting on with siblings, management and strategies
- Your role as a main carer and how best you can support your child
- Meet other parents - share own experiences

Eventbrite  
page:



To book please scan the QR code.

For further information please email:

[ehparenttrainers@warwickshire.gov.uk](mailto:ehparenttrainers@warwickshire.gov.uk)

OFFICIAL





**Rugby Borough Children and Family Centres (CFC)  
Easter Timetable 14th April 2025 - 18th April 2025**



Monday	Tuesday	Wednesday	Thursday	Friday
<b>Family Time</b> <b>Booking essential*</b> Aimed at 0-8 years 10.00am to 11.30am <b>Claremont CFC</b>	<b>Family Time</b> <b>Booking essential*</b> Aimed at 0-8 years 10.00am to 11.30am <b>Boughton Leigh CFC</b>	<b>Little Stars</b> For children with additional needs 10.00am to 11.00am <b>Claremont CFC</b>	<b>Toddler Time</b> <b>Booking essential*</b> Aimed at 0-5 years 10.00am to 11.30am <b>Claremont CFC</b>	<b>BANK HOLIDAY NO SESSIONS FRIDAY 18<sup>TH</sup> APRIL</b>
<b>Family Time</b> <b>Booking essential*</b> Aimed at 0-8 years 2:00pm to 3:00pm <b>Cawston Community Hall</b>	<b>Baby Time</b> Non-walkers from birth 2:00pm to 3:00pm <b>Boughton Leigh CFC</b>	<b>Family Time</b> <b>Booking essential*</b> Aimed at 0-8 years 10.00am to 11.30am <b>Long Lawford CFC</b>	<b>Baby Time</b> <b>Booking essential*</b> Non-walkers from birth 2:00pm-3:00pm <b>Claremont CFC</b>	
	<b>Baby Time</b> Non-walkers from birth 10.00am to 11.00am <b>The Barn @ Houlton (CV23 1AL)</b>	<b>Active Kidz with Little Chef</b> <b>Booking essential*</b> Aimed at 5- 10 years 2:00pm - 4:00pm <b>Claremont CFC</b>	<b>Baby Time</b> <b>Booking essential*</b> Non-walkers from birth 2:00pm-3:00pm <b>Long Lawford CFC</b>	 Stay up to date with the latest Children & Family Centre news! <b>@Rugby children and family centres @RugbyCFC</b>

**Rugby Borough Children and Family Centres (CFC)  
Easter Timetable 21<sup>st</sup> April - 25<sup>th</sup> April 2025**

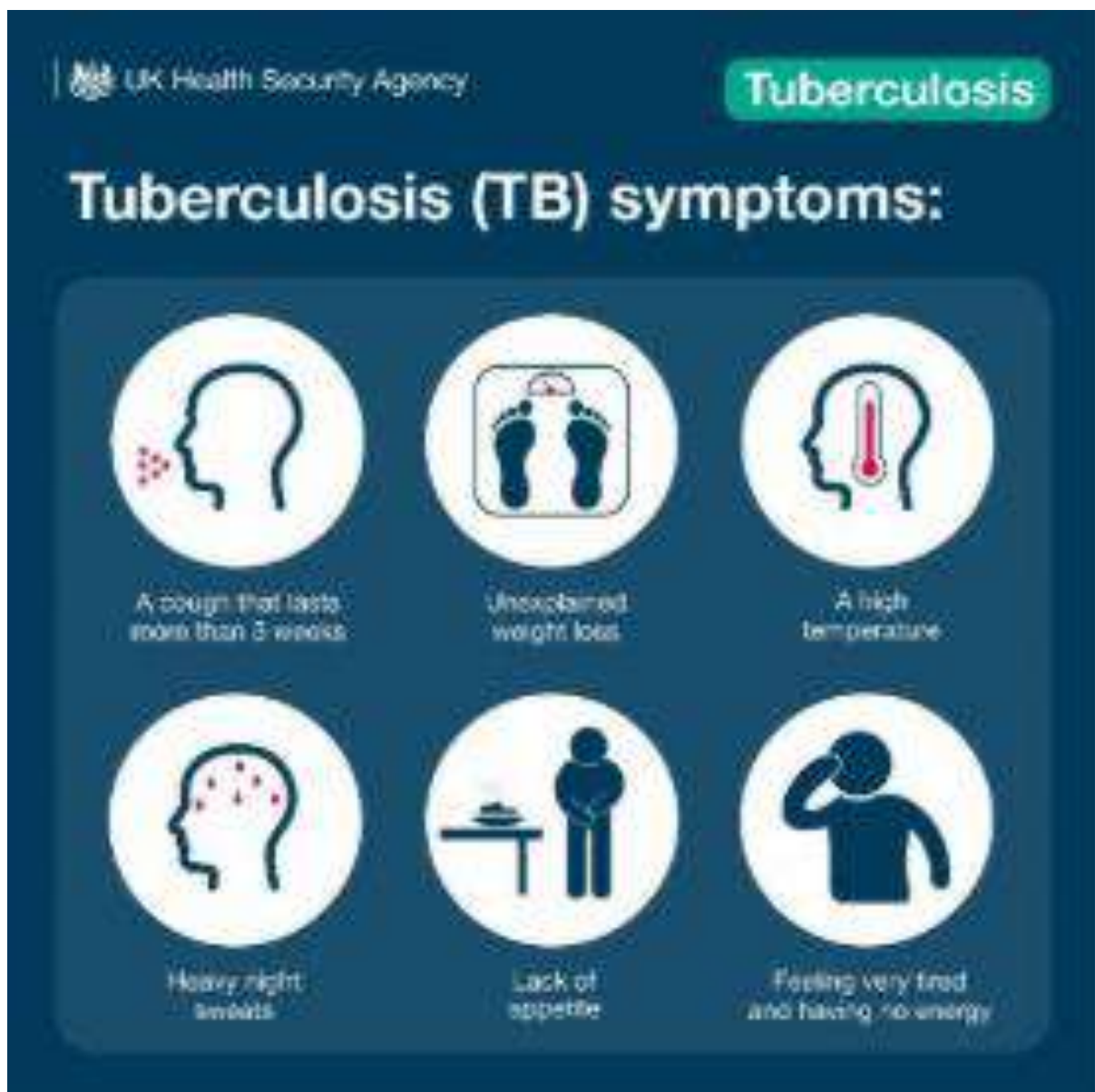
<b>BANK HOLIDAY NO SESSIONS MONDAY 21<sup>ST</sup> APRIL</b>	<b>Family Time</b> <b>Booking essential*</b> Aimed at 0-8 years 10.00am to 11.30am <b>Boughton Leigh CFC</b>	<b>Little Stars</b> For children with additional needs 10.00am to 11.00am <b>Claremont CFC</b>	<b>Family Time</b> <b>Booking essential*</b> Aimed at 0 - 8 years <b>Claremont CFC</b>	<b>Toddler Time</b> Aimed at 0-5 years 10.00am to 11.00am <b>Rogers Hall (CV1 4EN)</b>
	<b>Walk-in Wardrobe</b> Pre-loved clothes for 0-5's 9.30am to 11.30am <b>14/04 16/04 23/04 25/04</b> <b>Toy Library</b> 9.30am to 11.30am <b>Claremont CFC</b> DATES: 14/04	<b>Baby Time</b> Non-walkers from birth 10.00am to 11.00am <b>The Barn @ Houlton (CV23 1AL)</b>	<b>Active Kidz with Little Chef</b> <b>Booking essential*</b> Aimed at 5 - 10years 2:00pm - 4:00pm <b>Claremont CFC</b>	<b>Baby time</b> <b>Booking essential*</b> Non-walkers from birth 2:00pm- 3:00pm <b>Claremont</b>

## TB: Know the symptoms

The West Midlands has seen an increase in Tuberculosis cases over recent months, so Warwickshire County Council is asking vulnerable groups to be aware of the signs and symptoms of TB.

Read more:

<https://www.warwickshire.gov.uk/news/article/6148/warwickshire-residents-urged-to-be-aware-of-the-symptoms-of-tuberculosis-following-an-increase-in-cases>



# ICS VCFSE Collaborative Assembly for Coventry and Warwickshire

Thursday 22nd May 2025 9.30am - 3.30pm

Stareton Hall, NAEC Stoneleigh, Stoneleigh Park, Warwickshire CV8 2LG

*'Working collaboratively as a sector to support Prevention and Reduce Health Inequality'*

This Assembly is the first official annual event of the VCFSE Collaborative, bringing groups and organisations from across the Integrated Care System (Coventry and Warwickshire), to discuss and share ideas on how it can engage and work together to help reduce health inequality.

This session welcomes any shape and size VCFSE organisation from Coventry and Warwickshire to join the Assembly. The Assembly is particularly keen to hear the voices of smaller community organisations and groups to help shape the future of the Collaborative and the ICS' relationship with the sector.

Collaborative working is very much a focus of the Integrated Care System and the VCFSE are a vital partner in supporting health, care, and wellbeing of the population, especially through prevention and reaching people and communities often missed by traditional services and pathways to health and social care services.

## The Assembly will include:

- Launch of the ICS VCFSE Collaborative (Coventry & Warwickshire) & Meet Representatives of the VCFSE Collaborative
- ICS Updates
- Building the Membership Portal
- Topic/themed based discussion groups to gather insight into specific communities or health conditions
- Meet and Chat to representatives to gather insight and inform 'voice'
- Introduction to the ICS Prevention Strategy -

You do not need to be a current member of the Collaborative to register. We welcome any group or organisation interested in the work of the ICS across Coventry and Warwickshire. Lunch and refreshments provided.

To book your place: [https://ics-vcfse-collaborative-assembly-cw-may-2025.eventbrite.co.uk \(-> wcava.us6.list-manage.com\)](https://ics-vcfse-collaborative-assembly-cw-may-2025.eventbrite.co.uk (-> wcava.us6.list-manage.com))

If you have any questions or difficulty booking, please email: [vcfsecollaborative@wcava.org.uk](mailto:vcfsecollaborative@wcava.org.uk)



# Coffee Morning

*FREE refreshments. All welcome!*



**citizens  
advice**

**Citizens' Advice will be attending every Wednesday. Come along for free advice and information on things like welfare benefits, disability issues, Universal Credit, debt, consumer matters, employment, housing, relationships, legal issues, health, education and much more.**

**At Brownsover Community Centre, Bow Fell, CV21 1JF.  
(next to the Doctor's surgery)**

**Coffee Morning Every Wednesday 10am – 12pm**

**For further info please contact Michelle Gravatt**

**Phone: 07775220821**

**Email: [michellegravatt@warwickshire.gov.uk](mailto:michellegravatt@warwickshire.gov.uk)**

**F: <https://www.facebook.com/RugbyCommunities>**



OFFICIAL

# Volunteer Recognition and Rewards Events 2025

Nominations are now open for our Volunteer Recognition & Reward Events 2025

Taking Place in  
Nuneaton, Bedworth and North Warwickshire  
Rugby  
South Warwickshire

Submit your nomination online via the QR code or contact CAVA via [info@wcava.org.uk](mailto:info@wcava.org.uk) or call your local team for support



Nominations close 9th May



VOLUNTEER RECOGNITION EVENTS - WARWICKSHIRE 2025

Got a great Volunteer or team of Volunteers in Warwickshire?

Submit your nomination via <https://forms.office.com/e/uTnJ3rAv11>







## **Rugby Borough Funding Fair**

**Wednesday, 21st May 2025**

11.00am-2.00pm

Rugby Thornfield Indoor Bowls Club, Bruce Williams Way, Rugby CV22 5LZ

**Are you a community or voluntary group, charity, CiC or not for profit organisation?  
Then join us at our next Rugby Funding Fair**

**Community and voluntary groups are invited to Thornfield Indoor Bowls Club to  
come and meet funders  
People can drop in between 11.00am and 2.00pm to have a look around the stalls  
and speak to the Grants Officers.**

**Confirmed funders include  
National Lottery Community Fund  
Groundworks  
Heart of England Community Foundation  
Severn Trent Community Fund  
Rugby Lotto  
The National Lottery Heritage Fund**

**Representatives from CAVA and the community team at Rugby Borough and  
Warwickshire County Council will also be there to speak to groups and offer  
support around funding.**

**There is free onsite parking and refreshments will be provided.**

**For more information, please contact Lou Beddoe  
Funding and Group Development Officer  
lou.beddoe@wcava.org.uk**

You can register interest in attending via this link  
[Rugby Borough Funding Fair Tickets, Wed, May 21, 2025 at 11:00 AM |  
Eventbrite](#)

Or scan the link below.





# Jobs



## WCAVA - Research Engagement Network Project Officer

Warwickshire & Solihull Community and Voluntary Action (CAVA) is recruiting a Research Engagement Network Project Officer.

Further information can be found [AT THIS LINK](#)

Information includes a downloadable Job Description and Person Specification, Job Advert and Application Form and where to apply for the job.

# Consultations

**CHANGE**  
**IS POSSIBLE!**

Rugby Foodbank gave out 7089 food parcels last year.  
37% of food parcels go to children.  
36% of people seeking help from BRAN CAB with council tax debt were single parents.

Rugby Foodbank and Citizens Advice are working together to try and change the way that council tax debt is collected.

We are looking for people with lived experience of council tax debt problems and Foodbank use to chat to us and help us to make a plan for change.

EMAIL: [CSTEPHENS@HOPE4.ORG.UK](mailto:CSTEPHENS@HOPE4.ORG.UK)  
WHATSAPP: 07955 295 419

Please tell us your council tax debt and Foodbank story.  
Confidentiality assured.

Hope4 Rugby foodbank

Public consultations launched on play area revamps



# PUBLIC consultations have been launched to give residents the chance to have a say on plans to revamp play areas in New Bilton and Brownsver

Following the 1<sup>st</sup> phase consultations, we are now doing our 2<sup>nd</sup> phase consulting on draft designs that were drawn up based on the earlier responses. We are really keen to hear people's thoughts on the proposals.

We'd be grateful if you could share and encourage people to respond.

Below is further info, links to the online plans and the online survey, and the consultation leaflets and posters and press release:

<https://rugby.gov.uk/w/public-consultations-launched-on-play-area-revamps>

**PROPOSED PLAY AREA IMPROVEMENTS**

**SITE FURNITURE & FENCING**

- Existing Perimeter Gates To be Retained with new top fence
- Maintenance Access Retained
- Existing Metal Seat Retained
- New Metal Seat (to match existing)
- Existing Urner Retained
- Existing Urner Replaced
- Existing Perimeter Bow Top Fence Retained
- Existing Perimeter Bow Top Fence Removed
- New Perimeter Bow Top Fence

**REPLACEMENT PLAY ITEMS**

- New Carousel or Pendulum Swing**  
Replace existing single point frame swing with a new carousel swing offering a choice of swing and sitting options, to accommodate different abilities and play styles, providing inclusive and exciting play for older children.
- New Inclusive Rocker**  
Replace existing single point frame swing with a new inclusive rocker offering a choice of swing and sitting options, to accommodate different abilities and play styles, providing inclusive and exciting play for older children.
- Replacement Oak Roundabout**
- New Metal Climbing Frame with Slide for Toddlers**  
Replace existing metal slide with a new inclusive climbing frame for toddlers aged 2-5 years. New unit to include a new low tunnel with small slide, a bridge or low tunnel or climbing structure and a low tunnel and a loop structure to provide social interaction and play.
- New Metal Climbing Frame with Slide for Juniors**  
Replace existing metal slide with a new inclusive climbing frame with slide for older children aged 6-11 years. New unit to provide a range of more challenging climbing and a long slide.
- New Interactive Play Panels & Games**  
Attached to existing perimeter fence to make better use of space.
- New Inclusive Wheelchair Roundabout**  
To provide greater play opportunities for less able children.
- New Play House**  
With roof and steps outside for provide a social hub for younger children to meet and play.
- New Inclusive Swing Frame**  
Replace existing metal frame swing with a new inclusive swing frame providing greater variety of swing for younger children, e.g. Double seat, 20" long seat and backward seat.
- New Inclusive Roundabout**  
To provide greater play opportunities for less able children.
- New Inclusive Roundabout**  
To provide greater play opportunities for less able children.

**ADDITIONAL PLAY ITEMS**

- New Play House**  
With roof and steps outside to provide a social hub for younger children to meet and play.
- New Interactive Play Panels & Games**  
Attached to existing perimeter fence to make better use of space.
- New Inclusive Wheelchair Roundabout**  
To provide greater play opportunities for less able children.

**NEW SURFACING**

- Soft Safer Surfacing (Rubber Mulch)**  
To provide a safer play area and a more inclusive play area for children with disabilities.
- Playground Floor Games**  
To provide a range of play opportunities for children with disabilities.
- New Tactile Paving**  
To provide a range of play opportunities for children with disabilities.

**PLAY EQUIPMENT**

- New Carousel or Pendulum Swing**
- New Inclusive Rocker**
- Replacement Oak Roundabout**
- New Metal Climbing Frame with Slide for Toddlers**
- New Metal Climbing Frame with Slide for Juniors**
- New Interactive Play Panels & Games**
- New Inclusive Wheelchair Roundabout**
- New Play House**
- New Inclusive Swing Frame**
- New Inclusive Roundabout**

**Playground Floor Games**

- Two Player Memory Game
- Target Play
- Language Recognition
- Themed Recognition
- Recognition Mats

**DRAFT FOR REVIEW**  
Charwellton Drive Play Area  
Initial Design Proposal - For Consultation  
Drawing No: 100-001-01  
Scale: As Shown Date: 25.02.22  
KOVA LANDSCAPE LTD





- KEY**
- Proposed Play Area Improvements**
- 1 Pedestrian Access with soft-falling Trip-Cover
  - 2 Maintenance Access and Access to the adjacent amenity areas
  - 3 New Combination Swing Frame Replace existing swing sets with a new combination swing frame providing greater variety of swings for younger children, e.g. to include seat, 11' Trip-Cover, and a hand-trip seat.
  - 4 Existing Dish Roundabout
  - 5 New Group Rocker Replace existing rocker swings with a group rocker or see saw allowing more than two children, or a group and child, to play together
  - 6 New Metal Climbing Frame with Slide for Toddlers Replace existing toddler sets with a new metal climbing frame for toddlers aged 2-5 years. New set to include at least one tower with small slide, a bridge or hand-trip, climbing net, interactive play panels and a sliding counter to promote social interaction and play.
  - 7 Inclusive Roundabout with wheel bar access allowing greater play opportunities for the able-bodied children
  - 8 Trampoline Area Replace existing trampoline equipment with two small (or one large) trampolines so that two children can bounce together
  - 9 New Metal Climbing Frame with Slide for Juniors Replace existing middle sets with a new metal climbing frame for juniors aged 6-10 years. New set to include at least one tower with small slide, a bridge or hand-trip, climbing net, interactive play panels and a sliding counter to promote social interaction and play.
  - 10 New Group Swing Replace existing trampolines with a group swing that provides a range of seating options offering both inclusion and seating capacity opportunities and promotes social interaction and teamwork
  - 11 New Street Cabrienne Replace existing cabrienne with an alternative to prevent children running
  - 12 Soft Surface for Surfing (Rubber Mulch) Replace existing soft surfacing with one layer
  - 13 New Tarmac Footpath
  - 14 Metal Seat Kit
  - 15 Metal Letter Sign Kit
  - 16 Existing Cycle Tracks Removal
- Wider Park Improvements**  
 Dependent on available funding
- 17 Existing Pedestrian Access
  - 18 Parking Vehicle Maintenance Access
  - 19 Existing Trees & Vegetation
  - 20 Newly Planted Trees
  - 21 Mown Grass Paths
  - 22 Gravel Knopknop
  - 23 Existing Sign
  - 24 Existing Sign
- Phase 1 Footpath Improvements**  
 No surfacing and wider existing tarmac footpath to provide improved access for all users and suitable for play use and along with existing through-amenity tarmac footpath, install 'Space' surfacing and environmentally friendly gravel path lighting to improve safety
- Phase 2 Footpath Improvements**  
 No surfacing and wider existing tarmac footpath to create a perimeter footpath to provide play opportunities (cycle, walking, running and play)
- Existing Footpath Pits**  
 Upgrade existing pits (one) to an enclosed mesh-covered area (2) and one (one) to a soft surface
- Existing Tree Shelter**  
 Replace in existing condition a well-working area for older children
- Children Fitness Provision**  
 Replace existing fitness frame equipment and relocate closer to the main shelter with good access to the footpath (see plan)
- New Community Garden**  
 With access to existing and new amenity areas close to play area

**PLAY EQUIPMENT**

1 **New Combination Swing Frame**  
 Replace existing swing sets with a new combination swing frame providing greater variety of swings for younger children, e.g. to include seat, 11' Trip-Cover, and a hand-trip seat.

2 **Existing Dish Roundabout**

3 **New Group Rocker**  
 Replace existing single rocker with a group rocker or see saw allowing more than two children, or a group and child, to play together

4 **New Metal Climbing Frame with Slide for Toddlers**  
 Replace existing toddler sets with a new metal climbing frame for toddlers aged 2-5 years. New set to include at least one tower with small slide, a bridge or hand-trip, climbing net, interactive play panels and a slide counter to promote social interaction and play.

5 **Inclusive Roundabout**  
 Replace existing roundabout with a new roundabout providing greater play opportunities for the able-bodied children

6 **Trampoline Area**  
 Replace existing trampoline equipment with two small (or one large) trampolines so that two children can bounce together

7 **New Metal Climbing Frame with Slide for Juniors**  
 Replace existing middle sets with a new metal climbing frame for juniors aged 6-10 years. New set to include at least one tower with small slide, a bridge or hand-trip, climbing net, interactive play panels and a sliding counter to promote social interaction and play.

8 **New Group Swing**  
 Replace existing trampolines with a group swing that provides a range of seating options offering both inclusion and seating capacity opportunities and promotes social interaction and teamwork

9 **New Street Cabrienne**  
 Replace existing cabrienne with an alternative to prevent children running

10 **Soft Surface for Surfing (Rubber Mulch)**  
 Replace existing soft surfacing with one layer

11 **New Tarmac Footpath**

12 **Metal Seat Kit**

13 **Metal Letter Sign Kit**

14 **Existing Cycle Tracks Removal**

15 **Existing Pedestrian Access**

16 **Parking Vehicle Maintenance Access**

17 **Existing Trees & Vegetation**

18 **Newly Planted Trees**

19 **Mown Grass Paths**

20 **Gravel Knopknop**

21 **Existing Sign**

22 **Existing Sign**

23 **Phase 1 Footpath Improvements**  
 No surfacing and wider existing tarmac footpath to provide improved access for all users and suitable for play use and along with existing through-amenity tarmac footpath, install 'Space' surfacing and environmentally friendly gravel path lighting to improve safety

24 **Phase 2 Footpath Improvements**  
 No surfacing and wider existing tarmac footpath to create a perimeter footpath to provide play opportunities (cycle, walking, running and play)

25 **Existing Footpath Pits**  
 Upgrade existing pits (one) to an enclosed mesh-covered area (2) and one (one) to a soft surface

26 **Existing Tree Shelter**  
 Replace in existing condition a well-working area for older children

27 **Children Fitness Provision**  
 Replace existing fitness frame equipment and relocate closer to the main shelter with good access to the footpath (see plan)

28 **New Community Garden**  
 With access to existing and new amenity areas close to play area

**FOR STAGE 2 CONSULTATION**

**New Bilton Rec Play Area**

Initial Design Proposal - For Consultation

Drawing No: A1-001-001-01  
 Scale: As Shown Date: 11.02.23

**KOVA LANDSCAPE LTD**

Plot 10, The Farm, Southwell, Nottinghamshire, NG12 5JF

# Volunteering

## VOLUNTEER TRUST FUNDRAISER OPPORTUNITY



### Trust Fundraiser

Help Health Exchange secure funding to improve community health. We are looking for a Trusts & Fundraising Volunteer to assist with grant writing, researching new opportunities, and supporting fundraising efforts.



#### **Volunteer Trust Fundraiser Opportunity**

Help Health Exchange secure funding to improve community health! We are looking for a Trusts & Fundraising Volunteer to assist with grant writing, researching new opportunities, and supporting fundraising efforts.

What you'll gain:

- Develop skills in grant writing and fundraising.
- Make a meaningful impact on community health.
- Work with a passionate team dedicated to positive change.

Who we're looking for:

- Strong written communication skills.
- Organised, reliable, and flexible.
- Fundraising experience is a plus.
- Flexible & Home-Based – A few hours per week/month.

Interested? Apply here [👉 https://reachvolunteering.org.uk/opp/trust-fu](https://reachvolunteering.org.uk/opp/trust-fu)



# Volunteers Wanted

Would you like to be an Older Friend  
to a child for regular outings of just 2-3 hours?

For more details and an application form, please contact:

**0845 838 2098\***

email: [info@friendshipproject.co.uk](mailto:info@friendshipproject.co.uk)

[www.friendshipproject.co.uk](http://www.friendshipproject.co.uk)

 Facebook/  Instagram/  Twitter@friendshipproj





# INTERESTED IN VOLUNTEERING?



If you are interested in volunteering at Shine a Light, please get in touch today we would love to hear from you.

Start making a difference today, contact us at:

[hello@shinealight.uk](mailto:hello@shinealight.uk)



At VASA, we see firsthand how volunteers transform lives. But we need your help to keep vital community services running.

💡 Here's How You Can Get Involved:

🚗 Volunteer Drivers: Help transport community members to essential appointments — your wheels can be a lifeline.

📞 Telephone Volunteers (Stratford-upon-Avon): Take those essential calls from those requiring transportation.

💙 Dementia Day Services Volunteers (Wellesbourne & Stratford): Support those living with dementia through meaningful engagement and care.

Whether you have a couple of hours a week or a day to spare, every moment matters. Volunteering doesn't just help others, it fills your own life with purpose too.

🌟 Visit <https://vasa.goassemble.com/opportunities/results> to learn more or sign up.

Let's work together to build a stronger, more connected community.

Have questions about volunteering? Ask away in the comments or email

[volunteer@vasa.org.uk](mailto:volunteer@vasa.org.uk), let's spark change together! 🗣️



## Barnardo's Warwickshire Children and Family Centres

A coordination of services for families with  
children and young people aged 0-19 and up to  
age 25 with SEND

# SATURDADS VOLUNTEERS NEEDED CLAREMONT CHILDREN & FAMILY CENTRE

Rugby Borough Children & Family Centre are recruiting a volunteer to support **Saturdads**, a group for dads, grandads and male carers and their children, held once a month, from 9:30am - 12pm. You would be working alongside an amazing team of Early Years Practitioners, creating fun and educational activities for children between 0-5 years old. This is a great opportunity if you're interested in gaining work experience, are retired or are somebody who would like to give back to the community.



### What's in it for you?

- Full induction and training provided
- Access to Barnardo's in-house job vacancies
- Regular supervisions and support
- Great chance to expand your CV with a volunteering role
- Develop experience working with young children and families
- A chance to contribute to your local community and a leading children's charity

Please contact Serena at [serena.langan@barnardos.org](mailto:serena.langan@barnardos.org) or on 07548846982 if you would like to find out more.

**BARNARDO'S**

Changing childhoods.  
Changing lives.





**Volunteers' Week returns!** <https://volunteersweek.org/>  
**Volunteers' Week** has always been about celebrating the amazing people who support charities and organisations across the UK. In 2024, 14.2 million volunteers gave their time, contributing £4.6 billion to the economy.

This year marks the 41st celebration of Volunteers' Week, taking place from 2nd-8th June 2025, continuing the tradition of recognising the invaluable impact volunteers make.

Learn more about Volunteers' Week and how you can get involved [here](#).



Hill Street Youth and Community Centre, Hill St, Rugby, CV21 2NB

01788 574258

If you'd like any further support with funding or group development, please contact CAVA's Funding & Group Development Officer for Rugby Borough, Lou Beddoe at [lou.beddoe@wcava.org.uk](mailto:lou.beddoe@wcava.org.uk).

If you'd like any support recruiting volunteers, please contact CAVA's Volunteer Coordinator for Rugby Borough, Amy Muzyka at [amy.muzyka@wcava.org.uk](mailto:amy.muzyka@wcava.org.uk).

# FUNDING

## Grant applications open for the Love Rugby Festival

Application deadline: Wednesday, 30th April 2025



Town centre businesses and community organisations and sports club across the borough can now apply for a grant to help stage an event during the festival, which takes place from 20 June to 6 July.

The Love Rugby Festival aims to create the borough's very own summer of love with a packed programme featuring live music, theatre, art, heritage and sport.

Rugby Borough Council has organised the festival to create a sense of pride in the borough, boost footfall in the town centre and celebrate Rugby's diverse communities.

The Love Rugby Festival coincides with Rugby School's Festival on The Close and Warwickshire Open Studios' Summer Art Weeks festival.

Community organisations and town centre business can now apply for a grant of up to £250 to stage a festival event in the town centre.

The community grants aim to support a wide range of events and activities which celebrate Rugby's arts, heritage and culture.

Meanwhile, sports clubs in the borough can apply for a grant of up to £500 to deliver free taster sessions to encourage new participation or stage an open day to promote the club.

Tom Kittendorf, Rugby Borough Council chief officer for leisure and wellbeing, said: "The Love Rugby Festival aims to promote the very best of the borough, bringing our communities together to celebrate our diversity and the place we live.

"Our town centre businesses, community and voluntary organisations, and sports clubs all have a vital part to play in helping us to spread the love this summer during the festival fortnight, so we're looking forward to receiving grant applications and putting the finishing touches to the full festival line-up."

Grant applications - dealt with on a first come, first served basis - must be submitted by Wednesday 30 April.

For more information - and to apply - visit [www.rugby.gov.uk/LoveRugby](http://www.rugby.gov.uk/LoveRugby)

The council plans to announce the full Love Rugby Festival line-up at [www.rugby.gov.uk/LoveRugby](http://www.rugby.gov.uk/LoveRugby) once details have been finalised.

For more information about staging a festival event - or support to promote your event - email [chris@ucltd.co.uk](mailto:chris@ucltd.co.uk)

**Refugee Week Small Grant Fund** is now open more details can be found on the Warwickshire County Council website on the Migration Services web pages I've dropped in the link below:

<https://www.warwickshire.gov.uk/refugee-week/refugee-week-2025>

It is a very simple application with only two key questions to complete.

It's a £5000 pot and the expectation is that we will award around 10 grants of £500 each. Applications are scored so it is a competitive process. Last year we had over 30 activities within the Refugee Week programme spread across Warwickshire and we hope to build on that this year. Planning meetings to coordinate activity are now biweekly and are ongoing on Microsoft Teams with additional area specific sub groups in Stratford for example. These are open meetings and if you would like to attend, please let me know and I can arrange an invite. The next meeting will be 24<sup>th</sup> April 2025 6.00 – 7.00 p.m.



## Mid Counties Co-operative – Doing Good Together Fund

Application deadline: Grants from the fund can be applied for at any time, subject to meeting the eligibility criteria and funds being available at the time of your application

### The Doing Good Together Fund

<https://community.midcounties.coop/funding>

provides small grants to community causes in need of support. From dinner and dance for dementia to plants for parks, or biscuits for book club to kits for cricket teams and more. Applicants need to be a Member of the Mid Counties Co-operative but full details on membership and how to apply can be found on their website.

## Highways Community Action Fund

Warwickshire community groups are being invited to take the lead in shaping improvements to their local roads and streets, thanks to a new £1 million investment from Warwickshire County Council.

The Warwickshire Highways Community Action Fund (HCAF) is designed to empower local communities by providing financial support for capital projects that enhance the highways in their area. From resurfacing footpaths to implementing road safety measures, the fund ensures that local voices are heard and that improvements that might not otherwise happen can be delivered. [Find out more.](#)

## Parkinson's UK Physical Activity Grants Programme

Application deadline: It is a rolling programme and applications will be accepted until all of the funding has been allocated

**Grants** (of between £500 and £3,000) are available for activity providers, communities, networks and organisations across the UK to develop new opportunities for people with Parkinson's to become and stay active or help increase their levels of physical activity.

Priority will be given to innovative and new project that will help people with Parkinson's:

- Become and stay active, or

Who are already active to significantly increase their levels of physical activity.



## Suez Communities Fund

Grants are available to non-profit making organisations in qualifying areas of England for improvements to local community facilities, historic buildings and structures, sport, and recreation facilities.

The LCF Primary Fund Programme supports capital improvement works to public amenity projects for community use

Grants of up to £50,000 available and the closing date for this round is 14th May 2025.

The Trust provides a [postcode checker](#) so that potential applicants can check the eligibility of the project's location.

Full information can be found [here](#) [SUEZ Communities Fund - Grantscape Grantscape](#)

## The 29th May 1961 Charitable Trust

Grants are awarded for both capital and revenue purposes and the programme is rolling, which means you can apply at any time. Grants awarded four times a year (usually March, June, September and December).

The Trust has an [Eligibility Quiz](#) to ensure your organisation and project are in line with their criteria

You should apply for what you need. Trustees will note any requested amount you may indicate, but they do not work on an “all or nothing” basis so they may provide support at a different level than that requested

Full information can be found [here](#)

<https://29may1961charity.org.uk/>



# WONDERFUL ON TAP

## Severn Trent Community Fund

Two funding programmes are available

[New Project Funding](#) which aims to support the wellbeing of communities in the Severn Trent region. They want to fund **new** projects that link to three key elements of community wellbeing - People, Place and Environment - and are really interested in projects that cover all three.

[Core Funding](#). Eligible charities and organisations can apply to be considered for a restricted core funding grant of between £5,000 - £20,000 for 1 year.

Full information can be found [here](#) [Severn Trent Community Fund | About Us | Severn Trent Water](#)

**Warwickshire County Council Youth Club Small Grants scheme.** Both new and existing groups are eligible to apply for between £3000 and £5000 to support staffing and rental costs for a year to help clubs grow and sustain universal youth work services.

The grant opens to applications on Tuesday 1<sup>st</sup> April and closes on Friday 23<sup>rd</sup> May.

For more details on the grant criteria and to access the application form, visit:

<https://www.warwickshire.gov.uk/youthclubgrants>

The recent media release can be accessed via,

<https://www.warwickshire.gov.uk/news/article/6065/funding-to-help-warwickshire-groups-working-with-young-people>.

**Natural England have shared a bulletin of Funding Opportunities for the West Midlands- Please see attached PDF for further information**



Please note:

- tight deadline grants are still included in case of 'ready to go' projects.
- Region-specific grants located first in newsletter
- England and UK-wide located later
- Please scroll right down for funds with no deadlines or repeats from previous month.
- None of the funds listed are specifically endorsed by Natural England.

## **The Skipton Building Society Foundation** (

<https://www.skiptoncharitablefoundation.co.uk/>) has announced it is reopening its grants programme with two new focus areas through which it aims to drive social impact.

The focus going forward will be to help people experiencing hardship and/or underserved groups within the UK to:

- Access a place to call home
- Improve financial wellbeing.

For both focus areas, priority will be given to charities supporting people in the top 50% of the UK Index of Multiple Deprivation ( [https://dclgapps.communities.gov.uk/imd/iod\\_index.html](https://dclgapps.communities.gov.uk/imd/iod_index.html) ).

Application deadline: Thursday, 1st May 2025

## **Funding available for women and girls charities**

The Women & Girls Match Fund is a match funding campaign for charities that are working to improve the lives of vulnerable, disadvantaged, or underrepresented women and girls in England and Scotland. The Women & Girls Match Fund campaign is led by The Big Give - the UK's leading platform for match funding. <https://biggive.org/women-girls-match-fund>

## **Youth group funding**

Youth groups across the county are invited to apply for small grants to support their work with young people aged 11-18.

Discover more: <https://www.warwickshire.gov.uk/news/article/6065/funding-to-help-warwickshire-groups-working-with-young-people>

## **The Woodland Trust: Free Trees for Schools & Community Groups**

Application deadline: Applications are expected to close in August 2025

The Woodland Trust are giving away hundreds of thousands of trees to help the UK reach its 2050 carbon net-zero target. Schools, nurseries, colleges, universities, outdoor learning centres, and other groups such as resident associations, sports clubs, parish councils, scouts and guides from across the UK are among the organisations eligible to apply for up to 420 saplings to improve their local environment.

Applications can be made for up to four separate tree packs as long as the total does not exceed 420 trees. The Woodland Trust are currently taking applications for tree packs to be delivered in November 2025.

[www.woodlandtrust.org.uk/plant-trees/schools-and-communities](http://www.woodlandtrust.org.uk/plant-trees/schools-and-communities)

## [The National Lottery](#)

The National Lottery are changing their grant funding.

<https://www.tnlcommunityfund.org.uk/>

Look out for an online webinar coming in April 2025 with grants officers about the changes.

## [Sport England: Funding available for facilities damaged by extreme weather](#)

Application deadline: Open to applications

Sport England's Movement Fund is supporting community organisations that have been affected by the impact of Storms Bert, Conall, Darragh, Eowyn and Herminia.

Grants of up to £15,000 are available for community organisations to cover costs such as: skip hire to remove sediment and rubbish, minor electrical works to restore power, decontamination works or clearing of blocked drains, cleaning work to get showers and changing rooms back up and running and securing buildings.

Grants are available to not-for-profit organisations, including sports clubs, charities, schools and local authorities

<https://www.sportengland.org/news-and-inspiration/funding-available-facilities-damaged-extreme-weather>

## [Heart of England Community Foundation](#)

<https://www.heartofenglandcf.co.uk/available-grants/>

## [BBC Children in Need – Project Cost and Core Cost Grants](#)

The funding is intended for not-for-profit organisations that work with disadvantaged children and young people, under the age of 18, living in the UK.

Before applying to BBC Children in Need, we recommend you read about their processes and minimum standards for grant making. This will help you understand what they look for in a grant application.

BBC Children in Need often have several funding programmes open at any one time. before you apply, it is important that you choose the one which is right for you and your organisation. Click on of the links below to find out more about the funding programmes which are currently open.

- [Project Grants Funding Stream](#)
- [Core Grants Funding Stream](#)
- [Pudsey Next Steps Funding Stream](#)
- [Emergency Essentials](#)

Organisations can only apply for and hold one grant at any time.

## [Skipton Building Society Charitable Foundation](#)

Application deadline: Thursday, 1st May 2025

[The Skipton Building Society Foundation](#) has announced it is reopening its grants programme with two new focus areas through which it aims to drive social impact.

The focus going forward will be to help people experiencing hardship and/or underserved groups within the UK to:

- Access a place to call home
- Improve financial wellbeing.

For both focus areas, priority will be given to charities supporting people in the [top 50% of the UK Index of Multiple Deprivation](#). <https://www.skiptoncharitablefoundation.co.uk/>

## [Boost Charitable Trust](#)

Small grants (up to £750) are available to charities and not-for-profit organisations with a focus on helping disabled and disadvantaged individuals in the UK to participate in sport. This is a rolling programme, and applications may be submitted at any time by email or by post. <https://www.boostct.org/get-involved>

## [The Screwfix Foundation](#)

The Screwfix Foundation is awarding grants of up to £5,000 to non-profit organisations in the UK. Eligible organisations must support people in need, such as those experiencing financial hardship, sickness, or other disadvantages. Funding must be used towards projects that relate to the repair, maintenance, improvement or construction of homes and community buildings.

All applications are reviewed individually by our team on a quarterly basis, the review dates are in February, May, August, and November. <https://www.screwfix.com/landingpage/screwfix-foundation>

## [Tesco Stronger Starts Grant Programme](#)

Rolling Applications: No deadline - selection typically takes 6-12 months

The scheme is open to all schools, registered charities, and not-for-profit organisations, with priority given to projects that provide food and support to young people. Examples of eligible applications with a focus on food security, children and young people could be:

- A school providing pupils with food for breakfast clubs or snacks throughout the day
- A school wanting to buy equipment for outdoor or indoor activities
- A school wanting to develop a food growing area
- A school supporting an after-school club
- A voluntary organisation working with families to run a food bank
- An organisation addressing holiday hunger
- A healthy eating project that supports families to cook healthy meals on a budget
- A Brownie or Scout group needing funding for new play equipment or activities.

Grants of up to £1,500 are currently available.

Every three months, three local good causes are selected to be in the blue token customer vote in Tesco stores throughout the UK.

For more information and to apply, visit the [Tesco Stronger Starts](#) website. <https://tescostrongerstarts.org.uk/>



## Warwickshire County Council launches £1M Highways Community Action Fund

Warwickshire community groups are being invited to take the lead in shaping improvements to their local roads and streets, thanks to a new £1 million investment from Warwickshire County Council.

The Warwickshire Highways Community Action Fund (HCAF) is designed to empower local communities by providing financial support for capital projects that enhance the highways in their area. From resurfacing footpaths to implementing road safety measures, the fund ensures that local voices are heard and that improvements that might not otherwise happen can be delivered. [Find out more https://www.warwickshire.gov.uk/hcaf](https://www.warwickshire.gov.uk/hcaf)

## Natural England West Midlands have produced their list of funders,

which can be downloaded via, [Jan 2025 Funding Opportunities in the West Midlands.pdf](#). This is a very useful listing with a bias for projects and organisations looking to work in / with the natural environment.

**The Stobart Sustainability Fund** - [Funding for community-led sustainability projects \(UK-wide\)](#) The Stobart Sustainability Fund is providing funding to support the transformation of local communities through projects that tackle climate change, reduce emissions or protect and enhance the environment. Applications are welcomed from non-profit organizations, community groups, small businesses, and educational facilities. **No application deadline is provided.**

**The Energy Resilience Fund (ERF)** - [Grants and loans for charities and social enterprises to improve energy efficiency \(England\)](#) The Energy Resilience Fund (ERF) is providing a blended funding package of loan (60%) and grant (40%) to improve the energy resilience of eligible charities and social enterprises in England. Incorporated voluntary, community or social enterprise organisations that are looking to install energy saving measures or generation technology to buildings/ land, and/ or to purchase energy efficient or environmentally friendly vehicles or equipment are invited to apply for the fund. If required, the fund will arrange an energy audit before continuing with the application process. Applicants must be able to demonstrate that they are unable to access mainstream bank lending for the work. **There is no deadline for applications**

**The John Ellerman Foundation** - [Funding to build healthier ecosystems in urban and rural environment \(UK Wide\)](#) The John Ellerman Foundation is offering grants of between £10,000 and £50,000 per year for up to 3 years to UK-registered charities with an income of between £100,000 and £10m. The fund will prioritise projects that can make a national impact or local initiatives that have the potential to be upscaled to a country level. Eligible organisations should take an evidence-based approach to improve the natural environment and understand the significance of habitats on both human wellbeing and the impact that people have on nature. **There is no deadline for applications to this fund.**

## **The Heart of England Co-operative Society Helping Hearts Fund is open to applications**

Application deadline: All applications are considered at monthly meetings where committees discuss and agree applications

The Helping Hearts Award scheme was set up in 2000 to make awards to local charities, schools, community or self-help groups or similar organisations. Awards are granted from £25.00 for a raffle prize to £1,000 for specific projects. All organisations must be based or operating within the Society's trading area and the applicant must be a member of the Society. <https://heartofengland-coop.stackstaging.com/society/helping-hearts>

## Useful Contacts

Believe in  
children  
 Barnardo's

### Useful Contact Information



#### Family Information Service

Providing information, advice and one-to-one support for families with children & young people aged 0-25.

New Free Tel: 0800 408 1558

Tel: 01926 742274

Email: [fis@warwickshire.gov.uk](mailto:fis@warwickshire.gov.uk)

[www.warwickshire.gov.uk/fis](http://www.warwickshire.gov.uk/fis)

#### Children and Families Front Door

For concerns about a child's wellbeing

Tel: 01926 414144

#### Family Support Help Line

Monday to Friday:

9.00am to 4.00pm

Tel: 01926 412412

[www.warwickshire.gov.uk/childrenandfamilies](http://www.warwickshire.gov.uk/childrenandfamilies)

#### Breastfeeding Support Drop-in Group for Babies and Toddlers

Wednesdays: 10:00am to 11:30am  
Claremont Children & Family Centre

[swg-tr.breastfeedingnorth@nhs.net](mailto:swg-tr.breastfeedingnorth@nhs.net)

Tel: 01926 626529

#### Midwives

Maternity advice, The Owen Building, St. Cross Hospital

Tel: 01788 663184

#### Adult and Community Learning

<https://warwickshire.gov.uk/acl>

Tel: 01926 736392

#### Warwickshire Health Visiting Drop in Clinic

Tuesdays: 1:30pm to 3:00pm  
Claremont Children & Family Centre

#### Phone number and TEXT Chat Service

Advice & support for parents of pre-school children of Warwickshire

Text: 07520 615293

OR Tel: 01788 551212

#### Speech and Language Therapy Preschool Team

Tel: 01788 555107

#### Citizens Advice Bureau

Tel: 0808 250 5715

Interested in volunteering?  
please contact

[serena.langan@barnardos.org.uk](mailto:serena.langan@barnardos.org.uk)



WARWICKSHIRE & SOLIHULL

**CAVA**



COMMUNITY & VOLUNTARY ACTION

Hill Street Youth and Community Centre, Hill St, Rugby, CV21 2NB

[Click to Email](#)

01788 574258

### Warwickshire Pride



<https://warwickshirepride.co.uk/>

Email: [info@warwickshirepride.co.uk](mailto:info@warwickshirepride.co.uk)

Phone: [07580 532 659](tel:07580532659)

80 Spinney Hill. Warwick, Warwickshire. CV34 5SP

### Dementia Connect

[dementiaconnect@alzheimers.org.uk](mailto:dementiaconnect@alzheimers.org.uk)

[Call: 0333 150 3456](tel:03331503456)

If you are affected by dementia, worried about a diagnosis or a carer, trained staff are ready to give you the support you need.

Opening hours: Mon to Weds: 9am – 8pm, Thurs and Fri: 9am – 5pm, Sat and Sun: 10am – 4pm



**Rugby Wellbeing Hub - Coventry & Warwickshire**

**Mind – Service Information:**

Providing low level one to one support and signposting for people struggling with mental health

and emotional wellbeing, face to face one to one/small group options available late in 2020.

Contact us on 02477 712288 or [wbw@cwmind.or.uk](mailto:wbw@cwmind.or.uk)

**Warwickshire Safe Haven - Coventry and Warwickshire Mind**

Providing out of hours mental health support 6-11pm every evening by phone/text/email in first instance although face to face support is now available by appointment.

Contact us on 02477 714554 or 07970 042270 or [safehaven@cwmind.org.uk](mailto:safehaven@cwmind.org.uk)

**Community Adult Autism Support Service - Coventry and Warwickshire Mind**

Providing peer support, one to one sessions and group training sessions for adults and their carers living with autism. Contact us on 02477 714545 or [caass@cwmind.org.uk](mailto:caass@cwmind.org.uk)

**EQuIP, Equality and Inclusion Partnership**

EQuIP provides support, advice, and training. EQuIP's aim is to eliminate discrimination in all its forms. Address: Room 127, Morgan Conference Suite, Warwickshire College, Technology Dr, Rugby CV21 1AR

Website: <https://www.equipequality.org.uk/>

**Main Number: Please ring 0330 135 6606 and wait to be connected to the EQuIP office**

**Enquiries Number: 07377 431997**

Community Engagement: [07799 947860](tel:07799947860) and [07879 497516](tel:07879497516) [advice@equipequality.org.uk](mailto:advice@equipequality.org.uk)

Children and Family Support -The Family Information Service - Contact Warwickshire's Family Information Service for advice and guidance on a wide range of subjects.

Phone: 01926 742274 Email: [fis@warwickshire.gov.uk](mailto:fis@warwickshire.gov.uk)

Available Monday to Friday, 9am to 5pm.

**Family Support** - Contact a Family Support Worker for advice and guidance on parenting and all aspects of family life.

Support can be offered through telephone calls, video calls, text messages or email to suit your needs.

Phone: 01926 412412 - Available Monday to Friday 9am to 4pm. All enquiries will be responded to during this time.

To contact your local district or borough family support team via email please visit:

[www.warwickshire.gov.uk/familysupport](http://www.warwickshire.gov.uk/familysupport) - for more information.

For more information and advice for families including parenting courses, workshops, and other support services go to: [www.warwickshire.gov.uk/childrenandfamilies](http://www.warwickshire.gov.uk/childrenandfamilies)

### **Act On Energy**

AOE encourages energy conservation by providing and impartial advice to householders and small businesses in Warwickshire, Worcestershire, Birmingham, Coventry, Solihull and surrounding local areas.

For additional information, visit [HERE](#)

Or call the Free Advice Line on 0800 988 2881

To see how we use your personal data and what your information rights are, please read our overall [customer privacy notice at](#) which includes the contact details if you have a complaint about your information rights.

For general enquiries, contact Warwickshire County Council customer services on 01926 410410

*You have received this email bulletin as you are currently signed up to the Rugby communities Community Information Update mailing list. If you would like to be removed from this mailing list, please email [cdwrugby@warwickshire.gov.uk](mailto:cdwrugby@warwickshire.gov.uk)*

**Please also remember that we are sharing this information as a service to the community, it does not necessarily mean that the services or events advertised in this email are endorsed by Warwickshire County Council.**



free