



Rugby Communities

E-Bulletin

April 2025

Welcome to the latest edition of our E -Bulletin

If you would like to promote an activity/event or information, please send it through to cdwrugby@warwickshire.gov.uk

Please let us know at any time if you no longer wish to receive these updates

Pages 2 Events, Activities, and Information

Page 38 Consultations

Page 41 Volunteering

Page 47 Funding

Great Big Green Week 2025: 7th to 15th June 2025

Great Big Green Week is the UK's biggest celebration of community action to tackle climate change and protect nature.

<https://www.greatbiggreenweek.com/about>

During the week, communities, schools, businesses, churches, mosques, and more join together in a wave of support for action to protect the planet.

Are you planning anything to correspond with the Great Big Green week 2025?

Why not swap throwing away unloved items for giving them a new lease of life, or swap skills with another organisation in your area. You could come together with neighbours in your street to swap an unloved area to one that attracts wildlife.

The possibilities are endless. However, every swap will add together to make a big difference.

It could be something you already do, like a regular litter pick, or grow some veg.

Or it could be something new, like having a plastic free picnic or ride your bike to school or work.

There are lots of resources and ideas to be found here:

<https://www.greatbiggreenweek.com/resources>

If so, we would like to hear from you as we are planning a few activities and would like to promote all the wonderful things that happen in Rugby Borough to help the planet, we live on, to thrive.

Please send your plans and ideas to CDW Rugby

cdwrugby@warwickshire.gov.uk





Food & Faith Festival

Saturday 10th May, 2025
12 noon – 3pm

Rugby Indian Community Centre
Edward Street, Rugby,
CV21 2EZ

Come and sample some **FREE FOOD** from local places of worship around Rugby in a relaxed and friendly environment. Have a chat and learn about different faiths and cultures and talk to your local policing team.

For more information, email foodandfaithfestival@warwickshire.police.uk

The event is **FREE** to attend, please scan the QR Code to book.



WARWICKSHIRE
POLICE



www.warwickshire.police.uk



warwickshirepolice



warwickshirepolice



@warkspolice

WCAVA are excited to announce that nominations are now open for the **Volunteer Recognition & Reward Event 2025**, to celebrate the exceptional contributions of volunteers in our community.

We are celebrating all volunteers and every individual or group nominated will receive a special mention at the event. The categories for recognition will be decided by the Volunteering Coordinator, ensuring that each volunteer's unique contributions are acknowledged in the best possible way.

If you know of an individual or group of volunteers who have made a significant impact—whether it's through running community projects, supporting local causes, or simply giving their time to help others—we invite you to nominate them for recognition.

Save the Date!

The event will be held at The Benn Hall, Newbold Rd, Rugby CV21 2LN on Wednesday 9th July 2025 from 6:30 PM to 8:30 PM.

To nominate an individual or a group, simply complete a brief online form (see link below) explaining why you believe they deserve recognition. This is an opportunity to honour the incredible work being done in our communities.

<https://forms.office.com/e/uTnJ3rAv11>

For more information or if you need assistance, please reach out to:

Amy Muzyka - amy.muzyka@wcava.org.uk (Volunteering Coordinator - Rugby Borough)

We look forward to celebrating the dedication and passion of our volunteers and acknowledging their amazing contributions.



Improved support for unpaid carers across Warwickshire via new digital platform

A new digital platform designed to support unpaid carers has launched in Warwickshire.

The smart, easy-to-use service, called Bridgit Care, has been commissioned by Warwickshire County Council (WCC) to help carers find the resources they need, whenever they need them, while also connecting them to in-person support available locally.

There are over 50,000 unpaid carers in Warwickshire (2021 Census). If you provide unpaid emotional or physical support for a friend, neighbour, family member or member of the community, you are a carer. Your age and the range of support you give do not matter.

Bridgit Care is now available to unpaid carers across the county in addition to the existing support provided by Caring Together Warwickshire [caringtogetherwarwickshire.org.uk]. The tool brings everything carers need together in one simple, easy-to-use platform. Whether it's finding answers to questions, planning for emergencies, or discovering local events, Bridgit is designed to make life easier for carers, including:

- **24/7 Support:** Quick advice and guidance whenever you need it, including finding local events and support services.
- **Smart Forms:** Register with your local Carers service, notify your GP you're a carer or apply for a Carers ID card - all with the Share you're a Carer smart form.
- **Carers Discounts:** Access savings with the Virtual Carers Card.
- **Emergency Planning Made Simple:** Easily plan for those "what if" moments.

If you're a carer in Warwickshire or know someone who is, learn more about Bridgit Care at:

<https://bridgit.care/support/ww/t=?wcc> [bridgit.care]

or scan the QR code below to get started.





Bulbs4Kids Registrations Now Open!

Registrations for Bulbs4Kids are now open! 🌸 Request your free bulb pack now and brighten up your school playground with cheerful spring blooms!

Let Children Discover Nature Through Play



With Bulbs4Kids, children learn about nature in a fun and accessible way. By planting bulbs themselves, they discover how flowers grow and bloom – a valuable lesson they won't soon forget!

Important Participation Requirements:

- For children aged 6-12 only (Year 2 to Year 6)
- Available only to primary schools
- Maximum one pack per school – multiple requests may lead to rejection
- Delivery in autumn – bulbs must be planted before winter
- Enter address details carefully – errors may result in rejection

Share Your Photos and Win the Golden Bulb Award!

As thanks for participating, we ask for:

-  Photos/videos of the planting moment
-  Photos/videos when the school garden is in bloom 🌸 🌿

Post them with #bulbs4kids on [Instagram/Facebook](#) or upload them to our [website](#). The best entry wins:

🏆 The Golden Bulb Award for the school

📺 A special gift for every pupil in the winning class

Register Now!

Go to uk.bulbs4kids.com and sign up your class. You'll receive the pack in autumn.

With flowery greetings,

Team Bulbs4Kids



Copyright © 2016 iBulb, All rights reserved.

Our mailing address is:

info@bulbs4kids.com



VAISAKHI PARTY

Evening entertainment by DJ Tony J
Local dancers



SPECIAL GUEST
Slinder Pardesi



Rugby Workers Club, 32 Oliver St, Rugby, CV21 2ET

Ticket prices:

Adults: £16, Children under 16: £8

17th
May

**FOOD & DRINK
ENTERTAINMENT**

5
PM

For more information contact:

Major Sidhu: 07803927944

Sheila Parmar : 07522345738

Prab Mann: 07415405444

Ravi Dhinsa: 07969696186

WARWICKSHIRE'S YOUTH CONFERENCE 2025:

FRIDAY 25 APRIL 2025

10am - 4pm (lunch provided), Warwick University

Sign up to Warwickshire's Youth Conference 2025 at
www.warwickshire.gov.uk/shapingtomorrow

OR scan the QR code:



“ The conference is an opportunity for young people to have their voices heard and contribute to shaping their community. It is a chance for them to connect with their peers, discuss relevant issues and have fun through interactive workshops and engaging activities. ”



**SHAPING
TOMORROW
TOGETHER**



Coffee and Craft

FREE refreshments. All welcome!



Come and decorate a jar to store your bits and bobs in or add a tea light and make it sparkle!

Free to attend, no experience needed.

All Welcome, children must be accompanied by an adult.

**At Brownsover Community Centre, Bow Fell, CV21 1JF.
(next to the Doctor's surgery)**

Wednesday 23RD April 2025 10am – 12pm

For further info please contact Michelle Gravatt

Phone: 07775220821

Email: michellegravatt@warwickshire.gov.uk

F: <https://www.facebook.com/RugbyCommunity>



The Coventry & Warwickshire Wellbeing Academy have refreshed their website. Hopefully, you can find courses more easily and avail of the huge amount of training available.

Here is the link to the Website which we hope you will freely distribute to your customers

<https://www.recoveryandwellbeing.co.uk/>

This is a tremendous resource that we are really lucky to have available to Coventry & Warwickshire residents. Please have a look and I am sure you will find something of interest!

Pen Making Evening

Here at the Cubbington Hobby Centre

Thursday 8th May at 7pm

All
Welcome!



Cubbington & Offchurch Woodturners would like to invite you to an expert demonstration in the fine art of turning pens by Paul Liggins. From a piece of wood or resin to a beautifully finished pen...it's magic!



VE Day
80th Anniversary

Monday 5th May 2025
Whitehall Recreation Ground, Rugby
11.00am - 5.00pm

Live music, funfair, bouncy
castle, dog show, charity, craft
and food stalls - and much
more...

Come and enjoy a great day with
the family!

www.rugbyspringfair.org.uk

**FIND OUT
MORE**





- ❑ Rugby Borough Council
- ❑ Healthwatch Warwickshire
- ❑ Rugby Health and Care Improvement Forum

Citizens Assembly
Friday 11th April,
9 am to 2pm,
Indian Association,
Edward Street, Rugby
CV21 2EZ

Rugby Citizens Assembly on Healthcare Briefing note and how to apply to participate

We are getting in touch to ask you to consider **participating** in the first Rugby Citizens Assembly on Healthcare. This follows on from workshops on the Governments NHS10-year plan held in January and February in Rugby.

Our aim is to produce a report which will establish the collective concerns, expectations and ideas of a diverse group of **People from the Borough of Rugby** interested in improving the health of the population of Rugby, including access to appropriate and accessible care when needed.

We would like you to participate **by replying to the email** on the next page. We will distribute the free "ticket" to attend using Eventbrite nearer the time. We will start registration at 9am for a prompt start at 9.30 am.

Representatives from some of the main bodies responsible for planning, monitoring and providing Healthcare services for Rugby will be at the meeting to update you on recent and future developments.

You will have the opportunity to submit questions ahead of the meeting for each section of the presentations. We will amalgamate all questions to cover the key issues raised. You will then join breakout groups around tables to discuss and deliberate on the **realistic solutions** that would improve Health and Healthcare for Rugby. We will use the presentations, answers, and the consensus on realistic solutions to write a report to be shared and promoted locally and beyond.

Please see page 2 for the timetable and the email for application and your question.

Registration opens 9am and we will start at 9.30am

Introduction and House Keeping 09:30 am	Cllr. Michael Moran Leader of the Council	7.5 mins
Welcome & Panel Introduction. Highlight that questions have been submitted and grouped	Cllr. Maggie O'Rourke Rugby Borough Council Portfolio holder Dr. Keith Edgar RHCIF / Facilitator	7.5 mins To 9.45am
Healthwatch "What we have Learned about Rugby"	Vina Fatania / Chris Bain Warwickshire Healthwatch	10 mins 10mins Q&A To 10.05am
Warwickshire Public Health "The Health of Rugby Now, How to Protect and Improve it"	Jamie-Rae Tanner Public Health Consultant - Warwickshire	10 mins 10mins Q&A To 10.25am
University Hospital Coventry and Warwickshire NHS Trust "Providing Care for Rugby"	Sue Noyes Chair UHCW NHS Trust Justine Richards Chief Strategy Officer UHCW NHS Trust	10 mins 10mins Q&A To 10.45am
Primary Care The Challenges and Future Development	Dr. Lesli Davis , Rugby GP and medical secretary of Warwickshire Local Medical Committee Tim Sacks Director of Primary Care, NHS Coventry and Warwickshire Integrated Care Board	10 mins 10mins Q&A To 11.05am
South Warwickshire University NHS Foundation Trust Collaboration and Integration	Jack Foster Associate Chief Operating Officer SWIFT	10 mins 10mins Q&A To 11.35am
Coventry and Warwickshire Partnership Trust Mental Health	Dr. Richard Onyon , Chief Medical Officer, Coventry and Warwickshire Partnership Trust	10 mins 10mins Q&A To 11.55am
Panel Question & Answers	All presenters with WCC & IBC guests	12.00 to 12.20 pm
Workshop Table based Outline presentation (Key topics from submitted questions)		To 1.40 pm
Refreshments/Light Lunch. Meeting people, Networking, Feedback forms Finish when you are ready. Tea, Coffee, Water will be available throughout		

Please respond by email, we will endeavour to get representative participation and sent you attendance tickets from Eventbrite as soon as we can.

The email is

theteam@rugbycitizensassembly.com

Please include your name, phone number, and your question in your email.



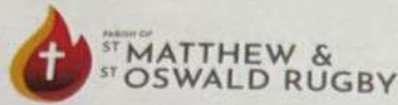
BPC WALKING GROUP

10:00am every Tuesday

**Starting from 8th April 2025.
Meet at Benn Partnership Centre,
Railway Terrace, Rugby CV21 3HR
Please arrive just before 10am**



St Matthew and St Oswald Rugby Celebration of Cultures Event



CELEBRATION OF CULTURES

Join us to celebrate and learn about our variety of cultures, and to remember that God loves the whole world, and all the people in it!

SATURDAY 10TH MAY 2025

TIME: 5- 7:30PM

CHURCH LOUNGE

SPECIAL EVENTS

**MUSIC
FASHION
FOOD**

ATTENDANCE IS FREE



**Register
Now**

PLEASE BOOK VIA THE CHURCH WEBSITE
[HTTPS://WWW.SMSO.ORG.UK/EVENTS/](https://www.smso.org.uk/events/)
OR VIA THE CHURCH OFFICE: 01788 330440

The church address is St Oswald's Church, Lawford Road, Rugby, CV21 2HR. The Church run popular ESOL classes on Tuesday between 1.30 p.m. – 3.00 p.m.

<https://www.smso.org.uk/events/>

VETERANS MOVING FORWARDS: BUILDING A BRIGHTER FUTURE

Co-designed by Veterans for Veterans

Course Aim

To provide you with the opportunity to gain clarity about your direction in life, develop tools and strategies to help you commit to action and make progress towards your brighter future.

The course is split into 6 x 3 - 3.5 hour modules, run over consecutive weeks.

1. Introductions, Ways of Working and Individual Aims.

2. **The Military Mindset:** understand how the human mind works and the impact of how your mind is shaped by your experiences.

3. **Breathe, Sleep, Move:** review your health and wellbeing and the positive changes you can make to your lifestyle.

4. **Learning to prioritise, plan and make good decisions:** learn and apply different tools to help you review your priorities and set actions.

5. **Overcoming obstacles to your progress:** recognise barriers to change and discover the benefits of thinking / planning ahead and review and reflection skills.

6. **Sustaining positive change:** Refresh and recap on your learning, review your support networks and develop an action plan for your future.

The course will be held at **Bulkington Village Centre**. Start date **29th April 2025** – **6 weekly sessions 11:00-13:00 every Tuesday**.



Course Highlights include:

- Understanding the impact of your military service on your current situation.
- Gaining perspective and clarity about your life's direction.
- Sustaining positive change.

Benefits of this course include:

- Tools and techniques to help you navigate life's challenges and implement positive change.
- Learning useful strategies to help you improve your own wellbeing.

Our Facilitation Team has been trained by Help for Heroes to deliver this course.

You can book on to this course via our website:

<https://recoveryandwellbeing.co.uk/Enrolment>.

If you have any queries, email us at: recovery.academy@covwarkpt.nhs.uk
Or call: 0300 303 2626

Patient and visitor car park changes

From April 2025...

Blue Badge registration



You will be able to register your Blue Badge by calling **01493 738 281**.

This only needs to be done **once** for the vehicle with the Blue Badge.

If you are unable to register before your visit, you can find **instructions on the signage** in our disabled car park.

Online parking payments



Online payment for parking will switch to the **Evology app**.

You can download the app from the **Play Store** or **App Store**.

Payment machines will **remain** on our sites for those wishing to pay in person.

Scan the QR code for more information about the changes



WALK + talk



MONTHLY GUIDED WALKING SOCIAL GROUP

5K SOCIAL WALK FROM HILL STREET CENTRE

FIRST TUESDAY OF EACH MONTH

GET ACTIVE. MEET NEW PEOPLE. EXPLORE RUGBY

ADULTS ONLY 18+

GUIDED BY HILL STREET STAFF (FIRST AID TRAINED)

REFRESHMENTS PROVIDED AT END OF WALK

DOGS WELCOME TO JOIN US 

FREE TO ATTEND FOR ALL

STARTING 1ST APRIL 2025
09.30AM - 12.30PM



CALL THE CENTRE ON 01788 576041

TO BOOK YOUR SPACE IN ADVANCE



HILL STREET YOUTH & COMMUNITY CENTRE
HILL STREET, RUGBY, WARCS, CV21 2NB



Spring Family Fun Day

Join us for an afternoon of Spring activities!
Including seed sowing, a nature trail and
more.



- 🌿 Overslade Community Centre
- 🌿 Tuesday 22nd April
- 🌿 Drop in between 1-4pm



CONTACT US
rugby@gardenorganic.org.uk
02476 303517

Working in Partnership

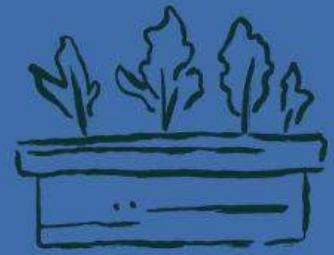
garden.
organic

Sustainable Container Growing; Free Workshop

Tuesday 13th May

Brownsover Community Centre

6-7:30pm



Come along to learn how to grow in containers in a more sustainable way. Learn about the advantages and disadvantages, and how to feed and water your containers. Make the most of your outdoor space with our interactive workshop.

Scan here to book your
space:



Please see below for our upcoming events, as part of the Rugby Community Champion project. We'd really appreciate it if you could share the events with your networks.

Upcoming events:

Tuesday 22nd April – Spring Family Fun Day, Overslade Community Centre, 1-4pm

Join us for an afternoon of Spring activities! Including seed sowing a nature trail and more. Drop in to Overslade Community Centre, between 1-4pm on Tuesday 22nd April to take part in the Spring activities.

Tuesday 13th May – Sustainable Container Growing. Brownsover Community Centre, 6-7:30pm

Come along to learn how to grow in containers in a more sustainable way. Learn about the advantages and disadvantages, suitable plants and how to feed and water your containers. Make the most of your outdoor space with our interactive workshop. The workshop will take place on Tuesday 13th May, at the Brownsover Community Centre. The event is free, but we do ask that you register so we know how many people to expect.

Please register here - <https://www.eventbrite.co.uk/e/growing-in-containers-sustainably-tickets-1307800880639?aff=oddtcreator>



Refugee Week 2025

[Refugee Week](#) 2025 is taking place between 16th and 22nd June 2025. It is the world's largest arts & culture festival celebrating the contributions, creativity and resilience of refugees and people seeking sanctuary. Established in 1998 in the UK, this annual global festival aligns with World Refugee Day, celebrated worldwide on June 20th.

The theme of Refugee Week 2025 is 'Community as Superpower' and Warwickshire County Council (WCC) want to celebrate the power of communities coming together in solidarity to support those people who have been displaced through conflict. It is about honouring everyday heroes who have offered their home, their time, or their expertise to support those who arrived in Warwickshire to rebuild their lives.

WCC want to raise awareness of people's journeys and recognise their contributions within their local community. Whether this is through arts, learning a new language together or sharing food, they want the week to be a celebration of resilience, strength and fostering a county that welcomes all.

Join them (and us) in organising and planning a diverse week of activities offering creative, engaging, and fun activities. However small or big, we want you to get involved in sharing time together to be part of a movement to create a significant change.

Please email: dominikastockham@warwickshire.gov.uk if you would like to find out more!

Family and Relationship Support offer for Rugby

have some spaces on programmes that are starting after the Easter break. The flyers and the direct link to the programmes are below:

Nurture Programme (Rugby) : <https://www.eventbrite.com/e/1074460804189?aff=oddttdcreator>

Keeping Your Child in Mind (Nuneaton) : <https://www.eventbrite.com/e/1000607001477?aff=oddttdcreator>

Solihull Approach Programme (Virtual): <https://www.eventbrite.com/e/1254301031149?aff=oddttdcreator>

Talking Teens Programme (Rugby): <https://www.eventbrite.com/e/1279031320109?aff=oddttdcreator>

There is also a spreadsheet with the workshops and programmes in Rugby and virtual delivery over the next couple of months which might be useful to have as a quick reminder.

They would like to start planning for after the Summer holidays so if you would like their team to come into your setting; and you have a space for them to deliver workshops or programmes, then please get in touch.



Nurture Programme

10-week programme for parents/carers at:
Cawston Grange Primary School, Scholars drive, Cawston,
Rugby CV22 7GU
Date: 28th April 2025 – 14th July 2025
Day: Monday's
Time: 12:30 – 14:30

Being a parent is exciting and rewarding but there are also times when children behave in ways that are challenging.

The Nurturing programme helps deal with those challenges so that you can have a calmer, happier life.

The 10-week Nurture Programme gives parents/carers practical tools and information to support you to raise happy, confident, and emotionally resilient children.

Eventbrite
page:



For enquires please contact ehparenttrainers@warwickshire.gov.uk



Warwickshire Family
and Relationship
Support

WARWICKSHIRE
Families
First

Talking Teens

FREE 4 Week Talking Teens Programme

for parents and carers at:

Coventry & Warwickshire Mind, 28
Cromwell Road, Rugby, CV22 5LY

5th June – 26th June 2025

Thursday's 10:00 – 12:30

Talking Teens is a 4-week programme for parents of teenagers with a focus on:

- Relationships within the family
- Communication
- Negotiating
- Decision-making
- Strategies to reduce conflict



Come along to meet other parents and learn about ways to support your teenager

Scan QR Code to
book your place:



For further information please email:

ehparenttrainers@warwickshire.gov.uk

OFFICIAL



**Warwickshire Family
and Relationship
Support**

**Solihull Approach Understanding Your
Child Parenting Programme**

FREE 10 week Programme for parents and carers.

Delivered Virtually

Date: 7th May 2025 - 9th July 2025

Day: Wednesday's

Time: 17:30 - 19:30

Would you like to know more about.....



- Your child's development - Age and Stage
- Your child's behaviours - Being angry, not getting on with siblings, management and strategies
- Your role as a main carer and how best you can support your child
- Meet other parents - share own experiences

Eventbrite
page:



To book please scan the QR code.

For further information please email:

ehparenttrainers@warwickshire.gov.uk

OFFICIAL

Rugby Workshop and programmes

Eventbrite page:



Date:	Face to Face	Virtual
10 th April		Understanding Children's Behaviour 2hr Workshop
16 th April		Sleep 2hr Workshop
22 nd April		Boundaries and Rules 2hr Workshop
28 th April	Nurture 10 week Programme	
29 th April	Understanding Children's Behaviour 2hr Workshop	
7 th May		Solihull Approach 'Understanding Your child' 10 week Programme
8 th May		Boundaries and Rules 2hr Workshop
17 th May		Routines 2hr Workshop
20 th May	Understanding Your Teenager 2hr Workshop	
27 th May		Understanding Children's Behaviour 2hr Workshop
3 rd June	Parenting Together 2hr Workshop	
5 th June	Talking Teens 5 Week Programme	
17 th June	Understanding children's Behaviour 2hr Workshop	
24 th June	Boundaries and Rules 2hr Workshop	
30 th June	Sleep and Routines 2hr Workshop	
1 st July		Parenting Together 2hr Workshop
8 th July	Understanding Your Teenager 2hr Workshop	



Rugby Borough Children and Family Centres (CFC) Easter Timetable 14th April 2025 - 18th April 2025



Monday	Tuesday	Wednesday	Thursday	Friday
Family Time Booking essential* Aimed at 0-8 years 10.00am to 11.30am Claremont CFC	Family Time Booking essential* Aimed at 0-8 years 10.00am to 11.30am Boughton Leigh CFC	Little Stars For children with additional needs 10.00am to 11.00am Claremont CFC	Toddler Time Booking essential* Aimed at 0-5 years 10.00am to 11.30am Claremont CFC	BANK HOLIDAY NO SESSIONS FRIDAY 18TH APRIL
Family Time Booking essential* Aimed at 0-8 years 2:00pm to 3:00pm Cawston Community Hall	Baby Time Non-walkers from birth 2:00pm to 3:00pm Boughton Leigh CFC	Family Time Booking essential* Aimed at 0-8 years 10.00am to 11.30am Long Lawford CFC	Baby Time Booking essential* Non-walkers from birth 2.00pm-3.00pm Claremont CFC	
	Baby Time Non-walkers from birth 10.00am to 11.00am The Barn @ Houlton (CV23 1AL)	Active Kidz with Little Chef Booking essential* Aimed at 5- 10 years 2:00pm - 4:00pm Claremont CFC	Baby Time Booking essential* Non-walkers from birth 2.00pm-3.00pm Long Lawford CFC	 Stay up to date with the latest Children & Family Centre news! @Rugby children and family centres @RugbyCFC

Rugby Borough Children and Family Centres (CFC) Easter Timetable 21st April - 25th April 2025

BANK HOLIDAY NO SESSIONS MONDAY 21ST APRIL	Family Time Booking essential* Aimed at 0-8 years 10.00am to 11.30am Boughton Leigh CFC	Little Stars For children with additional needs 10.00am to 11.00am Claremont CFC	Family Time Booking essential* Aimed at 0 - 8 years Claremont CFC	Toddler Time Aimed at 0-5 years 10.00am to 11.00am Rogers Hall (CV1 4EN)
Walk-in Wardrobe Pre-loved clothes for 0-5's 9.30am to 11.30am 14/04 16/04 23/04 25/04 Toy Library 9.30am to 11.30am Claremont CFC DATES: 14/04	Baby Time Non-walkers from birth 10.00am to 11.00am The Barn @ Houlton (CV23 1AL)	Active Kidz with Little Chef Booking essential* Aimed at 5 - 10years 2:00pm - 4:00pm Claremont CFC	Baby time Booking essential* Non-walkers from birth 2:00pm- 3:00pm Claremont	Toddler Time Aimed at 0-5 years 2:00pm to 3:00pm Long Lawford CFC
	Baby Time Non-walkers from birth 2.00pm-3.00pm Boughton Leigh CFC			



Prince's Trust

**START
SOMETHING**



**ARE YOU 16-25? LOOKING FOR SOMETHING DIFFERENT?
ARE YOU STUCK NEEDING DIRECTION?**

Then why not try The Prince's Trust Team Programme:

- **Free** 12 week personal development programme
- Develop your skills
- Gain Qualifications
- Have fun and make new friends
- Take up Team challenges and a community project!
- Realise your own potential
- Gain two weeks work experience
- Improve your employability skills
- Take part in a one week residential



INTERESTED?

Contact us for more information

To register your interest in joining the Rugby team, contact
Nikki Manzella at nmanzella@wcg.ac.uk or 07739 983182

wcg.ac.uk

0300 456 0049

info@wcg.ac.uk

New Challenges & Experiences



Day 1 - Meet new people

Don't worry about turning up on your own. They'll be about 12 people joining and everyone will be in the same situation. It will be informal and they'll be plenty of activities so you will soon feel part of things

Week 1 - Take Action

Over this week you will start planning for the weeks ahead - setting out what you want to achieve and finding out how to get your qualifications. You'll also be planning for a week away.



Week 2 - New Experiences

You'll spend this week away - trying new things and learning how to work with others. This gives you a chance to break away from your current situation. The sort of things you could do include canoeing, climbing, problem solving and much more!



Week 3-6 - Something to talk about

As a Team, you'll decide on a project to benefit your local community and carry it out. You might be surprised at what you can achieve together. This gives you a great experience to talk about at interviews.

Week 7-8 - Work Placements

This is the time to see how the skills you've developed so far can help you in the workplace. It's also a great chance to try out a type of work, or company, to see whether you like it.



Week 9 - Plan for the future

Time to plan your next steps after the programme. You'll get help to write a fantastic CV, practice your interview skills and make applications.

Week 10-11- Meet the challenge

You and your Team will take on a challenge to help others in the community. This is when you get to test out all the skills you'll have worked on so far.



Week 12 - Have your say

In your final week, you'll deliver a presentation with your team to an invited audience. This is your chance to show off the talents you've discovered! This may sound scary now, but after 12 weeks on Team you'll be surprised at how far you've come.



PLACES WHERE KIDS EAT FREE (OR FOR £1) EASTER HOLIDAYS 2025

moneysavingcentral.co.uk/kids-eat-free



BURGER KING

From Monday 7th - Sunday 20th April 2025, Kids Eat Free with every adult meal, via the app.

BILLS

Kids eat free Mondays - Fridays, from Monday 7th - Friday 25th April 2025.

FARMHOUSE INNS

2 kids eat FREE with one paying adult, Monday 7th - Friday 25th of April. Sign Up Required

TGI FRIDAYS

Kids Eat Free When 'Stripes Rewards Members' purchase any adult meal (Via App)

ZIZZI

Sunday 6th - Sunday 27th April 2025 kids eat free with every adult main. (excludes Saturdays)

CAFE EIGHTY NINE @ THE RANGE

Kids eat free Sat 5th April - Mon 21st April 2025

YO! SUSHI

Kids eat free all day (monday - friday) during all school holidays, when dining with an adult

SIZZLING PUBS

Every Monday to Friday, 3 - 7pm, kids eat for £1.

ASDA

Kids eat for £1 every, with no adult spend.

TRAVELODGE & PREMIER INN

2 kids eat for FREE with 1 adult breakfast

GORDON RAMSEY RESTAURANTS

Kids under 8 eat FREE all day, every day

WHITBREAD INNS

2 kids eat for FREE with 1 adult breakfast

BEEFEATER & BREWERS FAYRE

2 kids eat for FREE with 1 adult breakfast

IKEA

Kids get a meal from 95p daily from 11am

PREZZO

Kids receive a free, 3 course kids meal, everyday at Prezzo between 31st March - 27th April 2025

COCONUT TREE

One child (under 10) eats free every day, 12pm - 6pm from Monday 7th - Sunday 27th April 2025

PIZZA HUT

Kids eat free buffet from Monday 7th - Sunday 27th April, after 3pm daily with a £10 spend

PRETO

Kids up to age 10 eat free all day, every day with paying adults at Preto in Half Terms

SAINSBURYS CAFES

Kids eat for £1 with the purchase of an adult hot main. From 11:30am every day.

BELLA ITALIA

Children eat for £1 with any adult main. The offer is valid 4-6pm Sun to Weds. All Day Thursdays

MORRISONS

Kids Eat FREE all day, every day with a £5 spend

LAS IGUANAS

Kids under 12 eat FREE with 'My Las Iguanas' App

TABLE TABLE

2 Kids Eat free breakfast daily with 1 paying adult!

PAUSA CAFE @ DUNELM

Kids eat FREE with every £4 spend after 3pm

HUNGRY HORSE

Kids eat for £1 on Mondays

THE REAL GREEK

Kids under 12 eat FREE Sundays with £10 spend

SA BRAINS PUBS

Kids eat for £1 on Wednesdays

FUTURE INNS

Under 5s eat for free with any adult meal.

Copyright of MONEY SAVING CENTRAL

A community group that provides mental health support for new mothers has secured six-figure funding to continue the project for three more years

Project Matrescence is a six-week programme which provides a safe space for all new mothers in Warwickshire who are between six to 12 months postpartum.

Funding by a local donor and supported by The Parenting Project will mean the group can go on supporting women until 2028.

It aims to run six groups a year for free in various locations, including Kenilworth, Stratford, Rugby, Nuneaton, Bedworth, Leamington Spa and Warwick.

In 2023-24 NHS England estimated that perinatal mental illness - defined as significant stress, anxiety and depression - affected **57,000 new mothers, external**.

"Becoming a mother, is a unique time of change in a person's life, affecting every part of their experience; physical, psychological, social, economic and existential," said Helen Davies, psychotherapist, and Project Matrescence lead.

"We know that community support, psychoeducation, open and shared conversations around the realities of motherhood, and its individual impact, are incredibly helpful."

Groups are limited to 12 participants and include group discussions and activities such as clay-work, drawing, collage, journaling, and poetry.

A free creche has also been provided for attendees.



Butlers Mews
CARE HOME

Easter Fair

Sunday 20 April | 1.30pm - 4.30pm

Join us for a fantastic Easter celebration filled with fun activities for all ages, including craft stalls, a raffle, a tombola, and an exciting Easter egg hunt. Plus, get up close with adorable animals from the Animal Club!

01788 727001
averyhealthcare.co.uk

Ridge Drive | Rugby | CV21 3FE

Coffee Morning

FREE refreshments. All welcome!



**citizens
advice**

Citizens' Advice will be attending every Wednesday. Come along for free advice and information on things like welfare benefits, disability issues, Universal Credit, debt, consumer matters, employment, housing, relationships, legal issues, health, education and much more.

**At Brownsover Community Centre, Bow Fell, CV21 1JF.
(next to the Doctor's surgery)**

Coffee Morning Every Wednesday 10am – 12pm

For further info please contact Michelle Gravatt

Phone: 07775220821

Email: michellegravatt@warwickshire.gov.uk

F: <https://www.facebook.com/RugbyCommunities>



OFFICIAL

In support of



**Make Every
Cuppa Count**



Tea Party

Central Café

in the Rugby Central Shopping Centre

Saturday 26 April 2025

10am to 12 noon

Come and meet our fantastic volunteers and
awesome dogs whilst “making every cuppa count”

All proceeds to Rugby Guide Dogs



The Guide Dogs for the Blind Association is a company limited by guarantee and a registered charity in England and Wales (209617), Scotland (SC038979) and Isle of Man (1354) 8305 02/24





Tools



Kitchen



Garden



Home



Office

Library of Things

Why buy when you can borrow?

Eco-Friendly: Reduce waste and your carbon footprint.

Save Money: Access items you need without the cost of purchasing.

Save Space: No need to store one-off use items.

Try Before You Buy: Test out items before deciding to purchase.

Browse online today, collect Saturday, and make a difference!

**Open: Every Saturday
10am - 1pm**

**Claremont Centre, Betts Hall, 43 Clifton Rd,
Rugby CV21 3QE**

(entrance on Bath Street)

RUGBY ECO HUB

Our Library of Things is saving people across Rugby hundreds of pounds, plus freeing up space in their cupboards and sheds.

If you've had enough of owning too much stuff, you can join the Library of Things for just £5 per year.

Have a browse of our items now or drop in every Saturday morning to chat with our volunteers.

lot.rugbyecohub.org/products

The new **Framework for Day Opportunities for People with Dementia and Older People** (with and without personal care needs) launched 1st April 2025!

"Warwickshire County Council are pleased to share that after a successful tender process, the new framework of providers delivery day opportunities for people with dementia and older people will launch tomorrow, 1st April 2025. The framework includes a selection of providers who are delivering day opportunities across the county offering sessions to support people both with and without personal care needs.

Age UK Coventry and Warwickshire will continue delivering Dementia Day Opportunities through a block contract funded by Warwickshire County Council in addition to the new framework providers.

Services offer people living with dementia or older people without dementia an opportunity to socialise and participate in meaningful activities in a safe, accessible, and dementia friendly environment whilst enabling carers to access planned respite.

For more information on services available in your local area, please visit [Help and support in your local area – Living Well With Dementia](#). Services commissioned by the Council are indicated in the further information section listed for each provision on the website.

[Help and support in your local area – Living Well With Dementia](#)

PLAY IN THE PARK – NEW BILTON

ACTIVE.
CREATIVE.
PLAY.

Join The **Play Rangers** for **FREE** outdoor activities in New Bilton Park Spaces
Every Friday Term Time
4:00pm-5:30pm

Friday 4th April:

Addison Rd Park

(on the field in front of parkour park)

Friday 11th April:

Addison Rd Park

(on the field in front of parkour park)

Friday 2nd May:

Jubilee Recreation

Ground

(Bridle Rd)

Friday 9th May:

Jubilee Recreation

Ground

(Bridle Rd)

More Sessions to Follow



With thanks to the New Bilton Community Association.





Rugby Borough Funding Fair

Wednesday, 21st May 2025

11.00am-2.00pm

Rugby Thornfield Indoor Bowls Club, Bruce Williams Way, Rugby CV22 5LZ

**Are you a community or voluntary group, charity, CiC or not for profit organisation?
Then join us at our next Rugby Funding Fair**

**Community and voluntary groups are invited to Thornfield Indoor Bowls Club to
come and meet funders
People can drop in between 11.00am and 2.00pm to have a look around the stalls
and speak to the Grants Officers.**

**Confirmed funders include
National Lottery Community Fund
Groundworks
Heart of England Community Foundation
Severn Trent Community Fund
Rugby Lotto
The National Lottery Heritage Fund**

**Representatives from CAVA and the community team at Rugby Borough and
Warwickshire County Council will also be there to speak to groups and offer
support around funding.**

There is free onsite parking and refreshments will be provided.

**For more information, please contact Lou Beddoe
Funding and Group Development Officer
lou.beddoe@wcava.org.uk**

You can register interest in attending via this link
[Rugby Borough Funding Fair Tickets, Wed, May 21, 2025 at 11:00 AM |
Eventbrite](#)

Or scan the link below.



Consultations



CHANGE
IS POSSIBLE!

Rugby Foodbank gave out 7089 food parcels last year.
37% of food parcels go to children.
36% of people seeking help from BRAN CAB with council tax debt were single parents.

Rugby Foodbank and Citizens Advice are working together to try and change the way that council tax debt is collected.

We are looking for people with lived experience of council tax debt problems and Foodbank use to chat to us and help us to make a plan for change.

Please tell us your council tax debt and Foodbank story.

Confidentiality assured.

EMAIL:
CSTEPHENS@HOPE4.ORG.UK

WHATSAPP
07955 295 419



Public consultations launched on play area revamps

PUBLIC consultations have been launched to give residents the chance to have a say on plans to revamp play areas in New Bilton and Brownsover

Following the 1st phase consultations, we are now doing our 2nd phase consulting on draft designs that were drawn up based on the earlier responses. We are really keen to hear people's thoughts on the proposals.

We'd be grateful if you could share and encourage people to respond.

Below is further info, links to the online plans and the online survey, and the consultation leaflets and posters and press release:

<https://rugby.gov.uk/w/public-consultations-launched-on-play-area-revamps>

PROPOSED PLAY AREA IMPROVEMENTS

SITE FURNITURE & FENCING

- Existing Perimeter Access To be Retained (New Soft-Landing Toy Gate)
- Maintenance Access Retained (New Soft-Landing Gate for Soft-Landing Area)
- Existing Metal Seat Retained
- New Metal Seat (for match existing)
- Existing Urter Bin Retained
- Existing Urter Bin Retained
- Existing Perimeter Bow Top Fence Retained
- Existing Perimeter Bow Top Fence Retained
- New Perimeter Bow Top Fence

REPLACEMENT PLAY ITEMS

- New Carousel or Pendulum Swing (Replace existing single-point swing with a new carousel swing offering a choice of swing and seating options to accommodate different abilities and play styles, providing inclusive and exciting group play for older children)
- New Inclusion Rocker (Add a new rocker with a group rocker or rocker allowing more than two children, or parent and child, to play together)
- Replacement Dish Roundabout
- New Metal Climbing Frame with Slide for Toddlers (Replace existing toddler slide with a new inclusive climbing frame for children aged 2-4 years. New slide to include a slide for younger children, a slide for older children, or a slide for older children with a slide for older children)
- New Metal Climbing Frame with Slide for Juniors (Replace existing toddler slide with a new inclusive climbing frame for children aged 5-10 years. New slide to provide a range of slides for older children and older children)
- New Interactive Play Panels & Games (Attached to existing perimeter fence to make better use of space)
- New Inclusion Wheelchair Roundabout (To provide greater play opportunities for less able children)
- New Play House (New play and storage house to provide a useful hub for younger children to meet and play)

ADDITIONAL PLAY ITEMS

- New Play Station (Add a new play station to provide a useful hub for younger children to meet and play)
- New Interactive Play Panels & Games (Attached to existing perimeter fence to make better use of space)
- New Inclusion Wheelchair Roundabout (To provide greater play opportunities for less able children)

NEW SURFACING

- Soft Safety Surfacing (Rubber Mulch) (Replace existing play area and add safety surfacing rubber mulch under existing)
- Playground Floor Games (To provide a new play area on the surface of the play area to extend play opportunities)
- New Tactile Paving (Upgrade existing tactile paving to new tactile paving with colour coding)

PLAY EQUIPMENT

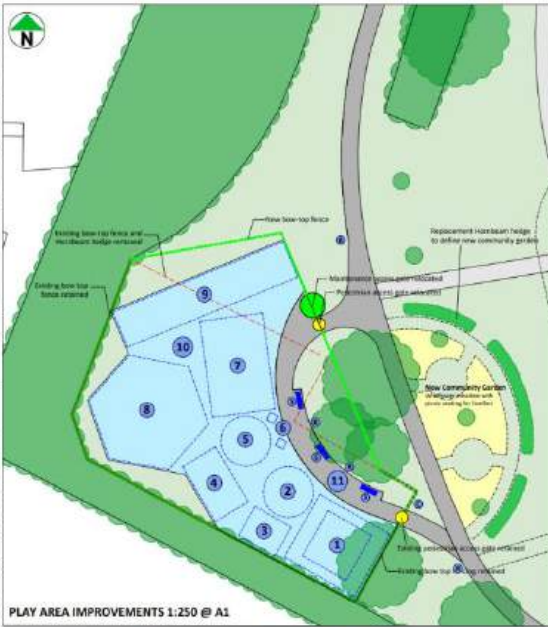
- New Carousel or Pendulum Swing (Replace existing single-point swing with a new carousel swing offering a choice of swing and seating options to accommodate different abilities and play styles, providing inclusive and exciting group play for older children)
- New Inclusion Rocker (Add a new rocker with a group rocker or rocker allowing more than two children, or parent and child, to play together)
- Replacement Dish Roundabout
- New Metal Climbing Frame with Slide for Toddlers (Replace existing toddler slide with a new inclusive climbing frame for children aged 2-4 years. New slide to include a slide for younger children, a slide for older children, or a slide for older children with a slide for older children)
- New Metal Climbing Frame with Slide for Juniors (Replace existing toddler slide with a new inclusive climbing frame for children aged 5-10 years. New slide to provide a range of slides for older children and older children)
- New Interactive Play Panels & Games (Attached to existing perimeter fence to make better use of space)
- New Inclusion Wheelchair Roundabout (To provide greater play opportunities for less able children)
- New Play House (New play and storage house to provide a useful hub for younger children to meet and play)

PLAYGROUND FLOOR GAMES

Personalised floor mats applied to the surface of the play area to extend play opportunities

- Two Player Tic Tac Toe
- Trampolines
- Language Mats
- Trivial Pursuit
- Memory Mats

DRAFT FOR REVIEW
Charwelton Drive Play Area
 Initial Design Proposal - For Consultation
 Drawing No: 10-001-001-01
 Date: 26/09/2024
 KOVA LANDSCAPE LTD



- KEY**
- Proposed Play Area Improvements**
- 1 New Combination Swing Frame
 - 2 Existing Disk Roundabout
 - 3 New Group Rooster
 - 4 New Metal Climbing Frame with Slide for Toddlers
 - 5 Inclusive Roundabout
 - 6 Trampoline Area
 - 7 New Metal Climbing Frame with Slide for Juniors
 - 8 New Group Swing
 - 9 New Steel Climbing
 - 10 Soft Surface Surfacing (Rubber Mulch)
 - 11 New Tarmac Pathway
- Wider Park Improvements**
 (Dependent on available funding)
- 12 Existing Footpath Access
 - 13 Existing Vehicle Maintenance Access
 - 14 Existing Trees & Vegetation
 - 15 Newly Planted Trees
 - 16 New Drain Path
 - 17 New Grass Paths
 - 18 Gravel Footpath
 - 19 New Bench
 - 20 Existing Seat
- Phase 1 Footpath Improvements**
 New footpath and access leading to new equipment to provide improved access to the play area and around the play area and along a 'bicycle' path to improve accessibility through the park.
- Phase 2 Footpath Improvements**
 New footpath and access leading to new equipment to provide a connection between the main play area and the new play area.
- Existing Footpath Fencing**
 To provide a secure and safe area for play.
- Existing Tree Shelter**
 To provide shelter for play equipment.
- Deliver Fitness Provision**
 To provide a new fitness area for play.
- New Community Garden**
 To provide a new community garden for play.
- FOR STAGE 2 CONSULTATION**
- New Bilton Rec Play Area**
- Initial Design Proposal - For Consultation
- Consulting No AL 003-001/P1
 Scale: As Shown Date: 15.07.20
- KOVA LANDSCAPE LTD**
- KOVA LANDSCAPE LTD is a registered company in England, No. 08474512, registered office: 10, The Arcade, Oldfield Road, Bilton, West Midlands, CV35 9PF

PLAY EQUIPMENT



Volunteering

VOLUNTEER TRUST FUNDRAISER OPPORTUNITY



Trust Fundraiser

Help Health Exchange secure funding to improve community health. We are looking for a Trusts & Fundraising Volunteer to assist with grant writing, researching new opportunities, and supporting fundraising efforts.



Volunteer Trust Fundraiser Opportunity

Help Health Exchange secure funding to improve community health! We are looking for a Trusts & Fundraising Volunteer to assist with grant writing, researching new opportunities, and supporting fundraising efforts.

What you'll gain:

Develop skills in grant writing and fundraising.

Make a meaningful impact on community health.

Work with a passionate team dedicated to positive change.

Who we're looking for:

Strong written communication skills.

Organised, reliable, and flexible.

Fundraising experience is a plus.

Flexible & Home-Based – A few hours per week/month.

Interested? Apply here [👉 https://reachvolunteering.org.uk/opp/trust-fu](https://reachvolunteering.org.uk/opp/trust-fu)

Volunteers Wanted

Would you like to be an Older Friend
to a child for regular outings of just 2-3 hours?

For more details and an application form, please contact:

0845 838 2098*

email: info@friendshipproject.co.uk

www.friendshipproject.co.uk

 Facebook/  Instagram/  Twitter@friendshipproj



INTERESTED IN VOLUNTEERING?



If you are interested in volunteering at Shine a Light please get in touch today we would love to hear from you.

Start making a difference today, contact us at:

hello@shinealight.uk



At VASA, we see firsthand how volunteers transform lives. But we need your help to keep vital community services running.

💡 Here's How You Can Get Involved:

🚗 Volunteer Drivers: Help transport community members to essential appointments — your wheels can be a lifeline.

📞 Telephone Volunteers (Stratford-upon-Avon): Take those essential calls from those requiring transportation.

💙 Dementia Day Services Volunteers (Wellesbourne & Stratford): Support those living with dementia through meaningful engagement and care.

Whether you have a couple of hours a week or a day to spare, every moment matters. Volunteering doesn't just help others, it fills your own life with purpose too.

🌟 Visit <https://vasa.goassemble.com/opportunities/results> to learn more or sign up.

Let's work together to build a stronger, more connected community.

Have questions about volunteering? Ask away in the comments or email

volunteer@vasa.org.uk, let's spark change together! 🗣️

Barnardo's Warwickshire Children and Family Centres

A coordination of services for families with
children and young people aged 0-19 and up to
age 25 with SEND

SATURDADS VOLUNTEERS NEEDED CLAREMONT CHILDREN & FAMILY CENTRE

Rugby Borough Children & Family Centre are recruiting a volunteer to support **Saturdads**, a group for dads, grandads and male carers and their children, held once a month, from 9:30am - 12pm. You would be working alongside an amazing team of Early Years Practitioners, creating fun and educational activities for children between 0-5 years old. This is a great opportunity if you're interested in gaining work experience, are retired or are somebody who would like to give back to the community.



What's in it for you?

- Full induction and training provided
- Access to Barnardo's in-house job vacancies
- Regular supervisions and support
- Great chance to expand your CV with a volunteering role
- Develop experience working with young children and families
- A chance to contribute to your local community and a leading children's charity

Please contact Serena at serena.langan@barnardos.org or on 07548846982 if you would like to find out more.

BARNARDO'S

Changing childhoods.
Changing lives.



Volunteers' Week returns! <https://volunteersweek.org/>
Volunteers' Week has always been about celebrating the amazing people who support charities and organisations across the UK. In 2024, 14.2 million volunteers gave their time, contributing £4.6 billion to the economy.

This year marks the 41st celebration of Volunteers' Week, taking place from 2nd-8th June 2025, continuing the tradition of recognising the invaluable impact volunteers make.

Learn more about Volunteers' Week and how you can get involved [here](#).



Hill Street Youth and Community Centre, Hill St, Rugby, CV21 2NB

01788 574258

If you'd like any further support with funding or group development, please contact CAVA's Funding & Group Development Officer for Rugby Borough, Lou Beddoe at lou.beddoe@wcava.org.uk.

If you'd like any support recruiting volunteers, please contact CAVA's Volunteer Coordinator for Rugby Borough, Amy Muzyka at amy.muzyka@wcava.org.uk.

FUNDING



Suez Communities Fund

Grants are available to non-profit making organisations in qualifying areas of England for improvements to local community facilities, historic buildings and structures, sport, and recreation facilities.

The LCF Primary Fund Programme supports capital improvement works to public amenity projects for community use

Grants of up to £50,000 available and the closing date for this round is 14th May 2025.

The Trust provides a [postcode checker](#) so that potential applicants can check the eligibility of the project's location.

Full information can be found [here](#) [SUEZ Communities Fund - Grantscape Grantscape](#)

The 29th May 1961 Charitable Trust

Grants are awarded for both capital and revenue purposes and the programme is rolling, which means you can apply at any time. Grants awarded four times a year (usually March, June, September and December).

The Trust has an [Eligibility Quiz](#) to ensure your organisation and project are in line with their criteria

You should apply for what you need. Trustees will note any requested amount you may indicate, but they do not work on an “all or nothing” basis so they may provide support at a different level than that requested

Full information can be found [here](#)

<https://29may1961charity.org.uk/>

SEVERN

TRENT

WONDERFUL ON TAP

Severn Trent Community Fund

Two funding programmes are available

[New Project Funding](#) which aims to support the wellbeing of communities in the Severn Trent region. They want to fund **new** projects that link to three key elements of community wellbeing - People, Place and Environment - and are really interested in projects that cover all three.

[Core Funding](#). Eligible charities and organisations can apply to be considered for a restricted core funding grant of between £5,000 - £20,000 for 1 year.

Full information can be found [here](#) [Severn Trent Community Fund | About Us | Severn Trent Water](#)

Warwickshire Youth Club Grants - Closing date Friday 23rd May 2025.

Warwickshire County Council, Warwickshire Youth Service is pleased to support funding for voluntary and community organisations in Warwickshire to support youth clubs across the county.

The Youth Club Grant is aimed at community and voluntary groups that provide youth clubs for 11 to 18-year-olds within Warwickshire. Its main purpose is to increase and enhance youth club capacity and capability in Warwickshire.

For more information go to

https://www.warwickshire.gov.uk/youthclubgrants?fbclid=IwY2xjawJiCBdleHRuA2FibQlXMQABHux8zRwvls2-WMxvYnwf3y6D5Qr_q9Hp9Ae-tYhtOsJxJ2a4rUmvRIKM9rSz_aem_7DtkkAo3f8meEP2ZiHGKiw

Warwickshire County Council Youth Club Small Grants scheme. Both new and existing groups are eligible to apply for between £3000 and £5000 to support staffing and rental costs for a year to help clubs grow and sustain universal youth work services.

The grant opens to applications on Tuesday 1st April and closes on Friday 23rd May.

For more details on the grant criteria and to access the application form, visit:

<https://www.warwickshire.gov.uk/youthclubgrants>

The recent media release can be accessed via,

<https://www.warwickshire.gov.uk/news/article/6065/funding-to-help-warwickshire-groups-working-with-young-people>.

Natural England have shared a bulletin of Funding Opportunities for the West Midlands- Please see attached PDF for further information

Please note:

- tight deadline grants are still included in case of 'ready to go' projects.
- Region-specific grants located first in newsletter
- England and UK-wide located later
- Please scroll right down for funds with no deadlines or repeats from previous month.
- None of the funds listed are specifically endorsed by Natural England.

The Skipton Building Society Foundation (

<https://www.skiptoncharitablefoundation.co.uk/>) has announced it is reopening its grants programme with two new focus areas through which it aims to drive social impact.

The focus going forward will be to help people experiencing hardship and/or underserved groups within the UK to:

- Access a place to call home
- Improve financial wellbeing.

For both focus areas, priority will be given to charities supporting people in the top 50% of the UK Index of Multiple Deprivation (https://dclgapps.communities.gov.uk/imd/iod_index.html).

Application deadline: Thursday, 1st May 2025

The National Lottery Community Fund Meet the Funder Warwickshire & Solihull

Tuesday, 29th April 2025, 10.00am-11.00am, Online via Zoom

In 2023 the NLCF launched their new seven-year strategy - 'It Starts With Community'.

Following this, they are making some exciting changes to how they will distribute over £3 billion to England's communities. **Come along** to our next 'Meet the Funder' event, presented by Funding Manager, Tamsin Davey, Funding Manager, to find out more.

Funding available for women and girls charities

The Women & Girls Match Fund is a match funding campaign for charities that are working to improve the lives of vulnerable, disadvantaged, or underrepresented women and girls in England and Scotland. The Women & Girls Match Fund campaign is led by The Big Give - the UK's leading platform for match funding.
<https://biggive.org/women-girls-match-fund>

Youth group funding

Youth groups across the county are invited to apply for small grants to support their work with young people aged 11-18.

Discover more: <https://www.warwickshire.gov.uk/news/article/6065/funding-to-help-warwickshire-groups-working-with-young-people>

The Woodland Trust: Free Trees for Schools & Community Groups

Application deadline: Applications are expected to close in August 2025

The Woodland Trust are giving away hundreds of thousands of trees to help the UK reach its 2050 carbon net-zero target. Schools, nurseries, colleges, universities, outdoor learning centres, and other groups such as resident associations, sports clubs, parish councils, scouts and guides from across the UK are among the organisations eligible to apply for up to 420 saplings to improve their local environment.

Applications can be made for up to four separate tree packs as long as the total does not exceed 420 trees. The Woodland Trust are currently taking applications for tree packs to be delivered in November 2025.

www.woodlandtrust.org.uk/plant-trees/schools-and-communities

The National Lottery

The National Lottery are changing their grant funding.

<https://www.tnlcommunityfund.org.uk/>

Look out for an online webinar coming in April 2025 with grants officers about the changes.

Sport England: Funding available for facilities damaged by extreme weather

Application deadline: Open to applications

Sport England's Movement Fund is supporting community organisations that have been affected by the impact of Storms Bert, Conall, Darragh, Eowyn and Herminia.

Grants of up to £15,000 are available for community organisations to cover costs such as: skip hire to remove sediment and rubbish, minor electrical works to restore power, decontamination works or clearing of blocked drains, cleaning work to get showers and changing rooms back up and running and securing buildings.

Grants are available to not-for-profit organisations, including sports clubs, charities, schools and local authorities

<https://www.sportengland.org/news-and-inspiration/funding-available-facilities-damaged-extreme-weather>

[Heart of England Community Foundation](#)

<https://www.heartofenglandcf.co.uk/available-grants/>

[BBC Children in Need – Project Cost and Core Cost Grants](#)

The funding is intended for not-for-profit organisations that work with disadvantaged children and young people, under the age of 18, living in the UK.

Before applying to BBC Children in Need, we recommend you read about their processes and minimum standards for grant making. This will help you understand what they look for in a grant application.

BBC Children in Need often have several funding programmes open at any one time. Before you apply, it is important that you choose the one which is right for you and your organisation. Click on one of the links below to find out more about the funding programmes which are currently open.

- [Project Grants Funding Stream](#)
- [Core Grants Funding Stream](#)
- [Pudsey Next Steps Funding Stream](#)
- [Emergency Essentials](#)

Organisations can only apply for and hold one grant at any time.

[Skipton Building Society Charitable Foundation](#)

Application deadline: Thursday, 1st May 2025

[The Skipton Building Society Foundation](#) has announced it is reopening its grants programme with two new focus areas through which it aims to drive social impact.

The focus going forward will be to help people experiencing hardship and/or underserved groups within the UK to:

- Access a place to call home
- Improve financial wellbeing.

For both focus areas, priority will be given to charities supporting people in the [top 50% of the UK Index of Multiple Deprivation](#). <https://www.skiptoncharitablefoundation.co.uk/>

[Boost Charitable Trust](#)

Small grants (up to £750) are available to charities and not-for-profit organisations with a focus on helping disabled and disadvantaged individuals in the UK to participate in sport. This is a rolling programme, and applications may be submitted at any time by email or by post. <https://www.boostct.org/get-involved>

[The Screwfix Foundation](#)

The Screwfix Foundation is awarding grants of up to £5,000 to non-profit organisations in the UK. Eligible organisations must support people in need, such as those experiencing financial hardship, sickness, or

other disadvantages. Funding must be used towards projects that relate to the repair, maintenance, improvement or construction of homes and community buildings.

All applications are reviewed individually by our team on a quarterly basis, the review dates are in February, May, August, and November. <https://www.screwfix.com/landingpage/screwfix-foundation>

Tesco Stronger Starts Grant Programme

Rolling Applications: No deadline - selection typically takes 6-12 months

The scheme is open to all schools, registered charities, and not-for-profit organisations, with priority given to projects that provide food and support to young people. Examples of eligible applications with a focus on food security, children and young people could be:

- A school providing pupils with food for breakfast clubs or snacks throughout the day
- A school wanting to buy equipment for outdoor or indoor activities
- A school wanting to develop a food growing area
- A school supporting an after-school club
- A voluntary organisation working with families to run a food bank
- An organisation addressing holiday hunger
- A healthy eating project that supports families to cook healthy meals on a budget
- A Brownie or Scout group needing funding for new play equipment or activities.

Grants of up to £1,500 are currently available.

Every three months, three local good causes are selected to be in the blue token customer vote in Tesco stores throughout the UK.

For more information and to apply, visit the [Tesco Stronger Starts](https://tescostrongerstarts.org.uk/) website.

<https://tescostrongerstarts.org.uk/>

Warwickshire County Council launches £1M Highways Community Action Fund

Warwickshire community groups are being invited to take the lead in shaping improvements to their local roads and streets, thanks to a new £1 million investment from Warwickshire County Council.

The Warwickshire Highways Community Action Fund (HCAF) is designed to empower local communities by providing financial support for capital projects that enhance the highways in their area. From resurfacing footpaths to implementing road safety measures, the fund ensures that local voices are heard and that improvements that might not otherwise happen can be delivered. [Find out more https://www.warwickshire.gov.uk/hcaf](https://www.warwickshire.gov.uk/hcaf)

Natural England West Midlands have produced their list of funders,

which can be downloaded via, [Jan 2025 Funding Opportunities in the West Midlands.pdf](#). This is a very useful listing with a bias for projects and organisations looking to work in / with the natural environment.

The Stobart Sustainability Fund - [Funding for community-led sustainability projects \(UK-wide\)](#)

The Stobart Sustainability Fund is providing funding to support the transformation of local communities through projects that tackle climate change, reduce emissions or protect and enhance the environment. Applications are welcomed from non-profit organizations, community groups, small businesses, and educational facilities. **No application deadline is provided.**

The Energy Resilience Fund (ERF) - [Grants and loans for charities and social enterprises to improve energy efficiency \(England\)](#) The Energy Resilience Fund (ERF) is providing a blended funding package of loan (60%) and grant (40%) to improve the energy resilience of eligible charities and social enterprises in England. Incorporated voluntary, community or social enterprise organisations that are looking to install energy saving measures or generation technology to buildings/ land, and/ or to purchase energy efficient or environmentally friendly vehicles or equipment are invited to apply for the fund. If required, the fund will arrange an energy audit before continuing with the application process. Applicants must be able to demonstrate that they are unable to access mainstream bank lending for the work. **There is no deadline for applications**

The John Ellerman Foundation - [Funding to build healthier ecosystems in urban and rural environment \(UK Wide\)](#) The John Ellerman Foundation is offering grants of between £10,000 and £50,000 per year for up to 3 years to UK-registered charities with an income of between £100,000 and £10m. The fund will prioritise projects that can make a national impact or local initiatives that have the potential to be upscaled to a country level. Eligible organisations should take an evidence-based approach to improve the natural environment and understand the significance of habitats on both human wellbeing and the impact that people have on nature. **There is no deadline for applications to this fund.**

The Heart of England Co-operative Society Helping Hearts Fund is open to applications

Application deadline: All applications are considered at monthly meetings where committees discuss and agree applications

The Helping Hearts Award scheme was set up in 2000 to make awards to local charities, schools, community or self-help groups or similar organisations. Awards are granted from £25.00 for a raffle prize to £1,000 for specific projects. All organisations must be based or operating within the Society's trading area and the applicant must be a member of the Society. <https://heartofengland-coop.stackstaging.com/society/helping-hearts>

To see how we use your personal data and what your information rights are, please read our overall [customer privacy notice at](#) which includes the contact details if you have a complaint about your information rights.

For general enquiries, contact Warwickshire County Council customer services on 01926 410410

You have received this email bulletin as you are currently signed up to the Rugby communities Community Information Update mailing list. If you would like to be removed from this mailing list, please email cdwrugby@warwickshire.gov.uk

Please also remember that we are sharing this information as a service to the community, it does not necessarily mean that the services or events advertised in this email are endorsed by Warwickshire County Council.